

Design Citywalk HK

Insiders' Picks / Culture & the City / Creative Landmarks / Design & Lifestyle / Architecture
Workshops & Experiences / Accommodation / Food & Beverage / Nightlife / Urban Escapes / Hidden Gems



This book and its contents were finalised in November 2023. While every attempt was made to provide accurate information at the time of publication, some facts may have changed. Visitors may refer to relevant parties should they wish to make enquiries.

A Design 101 of Hong Kong

As a vibrant hub of creativity and culture, Hong Kong offers myriad stunning design spots that await your discovery. From cutting-edge architecture, charming restaurants and cafés to inspiring shops and galleries, they make this city a treasure trove of inspiration. In this guide, we've curated 101 unique and intriguing design sites from across Hong Kong, in a range of categories sure to captivate design enthusiasts, travellers and locals alike. We hope it will serve as a stimulating starting point for exploring the rich and diverse design landscape of Hong Kong, before you go on to discover more design gems of your very own.

Eversion is here!



Let us guide you there!



Design Citywalk HK

101 Spots for Design Lovers

Contents 目錄

District Maps 分區地圖	4
Insiders' Picks 專業推介	15
Culture & the City 城市文化	26
Creative Landmarks 創意熱點	40
Design & Lifestyle 設計與生活	50
Architecture 建築設計	80
Workshops & Experiences 創意體驗	92
Accommodation 型格住宿	98
Food & Beverage 創新飲食思潮	107
Nightlife 夜遊創意	119
Urban Escapes 鬧市中的綠意	124
Hidden Gems 小眾精選	129
An Upcoming Design Spot 即將出現的設計熱點	134
Circular City Map 循環設計地圖	136
MTR System Map 港鐵路綫圖	138
Afterword 結語	140
Acknowledgements 鳴謝	142



INSIDERS' PICKS

- | | | |
|---|-----------------------------|----|
| 1 | Tai Ping Shan Street 太平山街 | 16 |
| 2 | The Murray 美利酒店 | 18 |
| 3 | Luk Yu Tea House 陸羽茶室 | 20 |
| 4 | HSBC Main Building 香港滙豐總行大廈 | 22 |
| 5 | Hong Kong City Hall 香港大會堂 | 24 |

CULTURE & THE CITY

- | | | |
|----|--------------------------|----|
| 7 | Asia Art Archive 亞洲藝術文獻庫 | 30 |
| 8 | Asia Society 亞洲協會香港中心 | 31 |
| 9 | H Queen's | 32 |
| 10 | Tai Kwun 大館 | 33 |

CREATIVE LANDMARKS

- | | | |
|----|---------------------|----|
| 17 | Central Market 中環街市 | 41 |
| 18 | PMQ 元創方 | 42 |

DESIGN & LIFESTYLE

- | | | |
|----|------------------------------|----|
| 26 | André Fu Living | 51 |
| 27 | BELOWGROUND | 52 |
| 28 | Goods of Desire (G.O.D.) 住好啲 | 53 |
| 29 | HINT. | 54 |
| 30 | KEF Music Gallery | 55 |
| 31 | Loveramics | 56 |
| 32 | Objective Lifestyle Shop | 57 |
| 33 | Pedder Arcade | 58 |
| 34 | Qeelin | 59 |
| 35 | SLOWOOD | 60 |

ARCHITECTURE

- | | | |
|----|--|----|
| 55 | Bank of China Tower 中銀大廈 | 81 |
| 56 | Central / Sheung Wan Walkway System 中區行人天橋 | 82 |
| 57 | Jardine House 怡和大廈 | 83 |
| 58 | Lippo Centre 力寶中心 | 84 |
| 59 | Union Church 佑寧堂 | 85 |

ACCOMMODATION

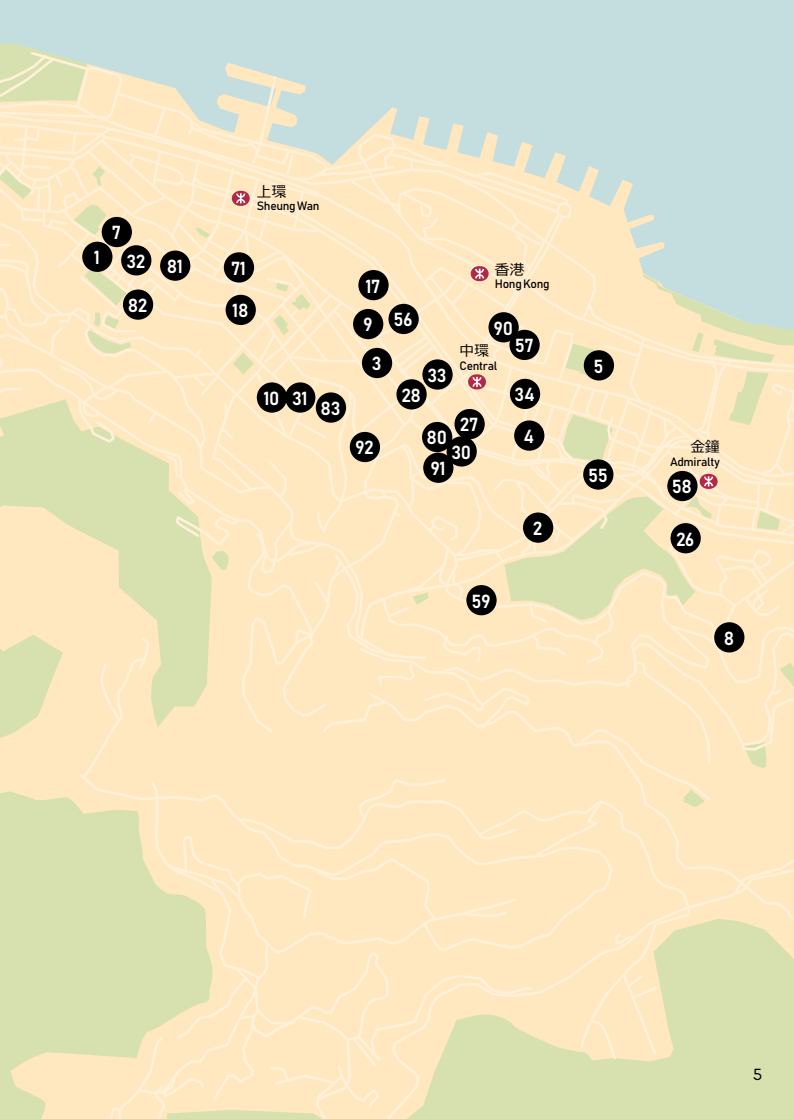
- | | | |
|----|-------|----|
| 71 | SLEEP | 99 |
|----|-------|----|

FOOD & BEVERAGE

- | | | |
|----|---|-----|
| 79 | Ah Jeng's Coffee Club 咖啡呀唔該 | 108 |
| 80 | Duddell's 都爹利會館 | 109 |
| 81 | Halfway Coffee 半路咖啡 | 110 |
| 82 | LOF10 辦館 | 111 |
| 83 | Magistracy Dining Room and Botanical Garden | 112 |
| 84 | Plantation Tea Bar 半坡茶莊 | 113 |

NIGHTLIFE

- | | | |
|----|------------------------------|-----|
| 90 | Artifact Bar | 120 |
| 91 | Foxglove | 121 |
| 92 | Ho Lan Jeng 何蘭正 | 122 |
| 93 | Ping Pong 129 Gintonería 乒乓城 | 123 |



上環
Sheung Wan

香港
Hong Kong

中環
Central

金鐘
Admiralty

Wan Chai & Eastern District 灣仔及東區

MAP 2



CULTURE & THE CITY

- | | |
|-----------------------------------|----|
| 11 Oi! 油街實現 | 34 |
| 12 Para Site | 35 |
| 14 Art and Culture Outreach 艺鵲ACO | 37 |

CREATIVE LANDMARKS

- | | |
|------------------------|----|
| 23 Lee Tung Avenue 利東街 | 47 |
|------------------------|----|

DESIGN & LIFESTYLE

- | | |
|---------------------------------|----|
| 36 Jesse & Julie (Latitude 22N) | 61 |
| 49 COLOURLIVING | 74 |
| 50 Kanamono Hardware Store 金社 | 75 |
| 51 kapok | 76 |
| 52 THE SHOPHOUSE | 77 |

ARCHITECTURE

- | | |
|----------------------|----|
| 64 OPUS HONG KONG 傲璇 | 90 |
|----------------------|----|

ACCOMMODATION

- | | |
|-----------------------|-----|
| 74 Apartment O 陳公館 | 102 |
| 75 The Fleming 香港芬名酒店 | 103 |
| 76 TUBE | 104 |

FOOD & BEVERAGE

- | | |
|---|-----|
| 85 Artistry Brewing Company (A. B. C.) 藝釀 | 114 |
| 86 Gitone 梓桐堂 | 115 |

URBAN ESCAPES

- | | |
|--|-----|
| 94 Quarryside 舍區 | 125 |
| 96 Viva Blue House - Hong Kong House of Stories 我哋藍屋 - 香港故事館 | 127 |



荔枝角
Lai Chi Kok

20

長沙灣
Cheung Sha Wan

CREATIVE LANDMARKS

- | | | |
|----|-----------------|----|
| 20 | D2 Place | 44 |
| 21 | JCCAC 賽馬會創意藝術中心 | 45 |

DESIGN & LIFESTYLE

- | | | |
|----|-----------------------------|----|
| 42 | Bunkaya Zakkaten 文化屋雜貨店 | 67 |
| 43 | Luen Cheong Leather HK 聯昌皮號 | 68 |
| 44 | MIDWAY shop | 69 |
| 45 | Moviemarks | 70 |

ARCHITECTURE

- | | | |
|----|---|----|
| 62 | Run Run Shaw Creative Media Centre
邵逸夫創意媒體中心 | 88 |
|----|---|----|

WORKSHOPS & EXPERIENCES

- | | | |
|----|------------------------|----|
| 66 | Mudheytong Gallery 物器堂 | 93 |
|----|------------------------|----|

ACCOMMODATION

- | | | |
|----|--|-----|
| 73 | YHA Mei Ho House Youth Hostel
YHA 美荷樓青年旅舍 | 101 |
|----|--|-----|

FOOD & BEVERAGE

- | | | |
|----|----------------------------|-----|
| 87 | Colour Brown X GO.ON Space | 116 |
| 88 | Whatever. Coffee | 117 |

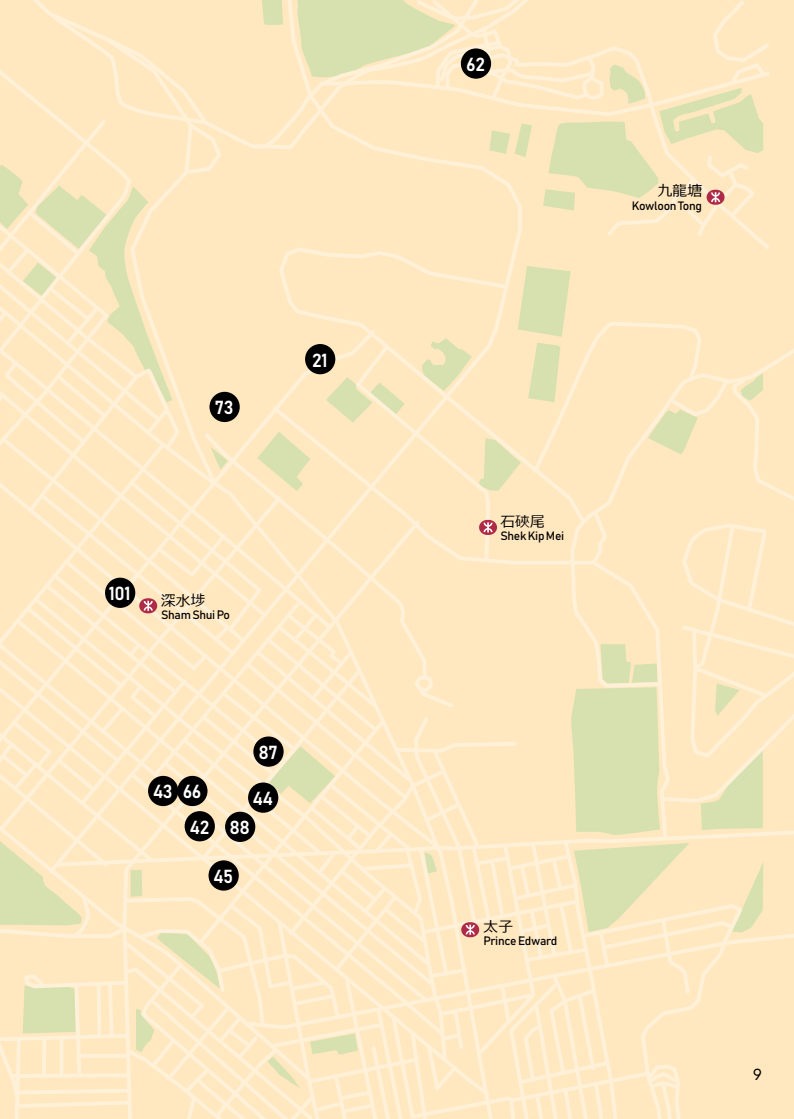
HIDDEN GEMS

- | | | |
|-----|------------|-----|
| 101 | Vinyl Hero | 133 |
|-----|------------|-----|

南昌
Nam Cheong

hk c
Hong Kong Design Centre
香港設計中心

*New headquarters
to come in late 2024*



62

九龍塘
Kowloon Tong

21

73

石硤尾
Shek Kip Mei

101
深水埗
Sham Shui Po

87

43

66

44

42

88

45

太子
Prince Edward

Yau Tsim Mong 油尖旺

MAP 4

南昌
Nam Cheong

旺角東
Mong Kok East

旺角
Mong Kok

油麻地
Yau Ma Tei

柯士甸
Austin

佐敦
Jordan

九龍
Kowloon

尖沙咀
Tsim Sha Tsui

尖東
East Tsim
Sha Tsui

6C

6A

6

6D

6B

53

69

16

77

65

24

15

54

25

97

78

70



* 土瓜灣
To Kwa Wan

* 何文田
Ho Man Tin

* 黃埔
Whampoa

* 紅磡
Hung Hom

CULTURE & THE CITY

- | | | |
|----|---|----|
| 6 | West Kowloon Cultural District
西九文化區 | 27 |
| 6A | M+ | 28 |
| 6B | Xiqu Centre 戲曲中心 | 28 |
| 6C | Hong Kong Palace Museum
香港故宮文化博物館 | 29 |
| 6D | Freespace 自由空間 | 29 |
| 15 | f22 foto space f22攝影空間 | 38 |
| 16 | kubrick | 39 |

CREATIVE LANDMARKS

- | | | |
|----|------------------|----|
| 24 | Harbour City 海港城 | 48 |
| 25 | K11 MUSEA | 49 |

DESIGN & LIFESTYLE

- | | | |
|----|----------------|----|
| 53 | Hak Dei 黑地 | 78 |
| 54 | Novel Fineries | 79 |

ARCHITECTURE

- | | | |
|----|--|----|
| 65 | Jockey Club Innovation Tower
賽馬會創新樓 | 91 |
|----|--|----|

WORKSHOPS & EXPERIENCES

- | | | |
|----|--|----|
| 69 | Hong Kong Open Press 香港活字館 | 96 |
| 70 | L'ÉCOLE Asia Pacific, School of
Jewelry Arts
L'ÉCOLE 珠寶藝術學院亞太區分校 | 97 |

ACCOMMODATION

- | | | |
|----|---------------------------------|-----|
| 77 | Eaton Hong Kong Hotel
香港逸東酒店 | 105 |
| 78 | K11 ARTUS 寓館 | 106 |

URBAN ESCAPES

- | | | |
|----|-------------------------|-----|
| 97 | Salisbury Garden 梳士巴利花園 | 128 |
|----|-------------------------|-----|
-

Kowloon City & Kwun Tong 九龍城及觀塘

MAP 5



Kwai Tsing & Tsuen Wan 葵青及荃灣

MAP 6



CULTURE & THE CITY

- 13 HKALPS & VESSEL 香港藝士民間及發現號 36

CREATIVE LANDMARKS

- 19 AIRSIDE 43
22 The Mills 南豐紗廠 46

DESIGN & LIFESTYLE

- 37 Classics Anew 新裝如初 62
38 TOKI NASHIKI 梨木製陶所 63
39 DOUGUYA HATCHAREA 黑池 64
40 Twenty One From Eight 廿一由八 65

ARCHITECTURE

- 60 Chi Lin Nunnery 志蓮淨苑 86

WORKSHOPS & EXPERIENCES

- 68 EONIQ 95

URBAN ESCAPES

- 95 Yi Pei Square Playground 二陂坊遊樂場 126

HIDDEN GEMS

- 98 Choi Hung Estate 彩虹邨 130
99 Yuet Tung China Works 粵東磁廠 131



Sha Tin & Sai Kung 沙田及西貢

MAP 7



Southern District 南區

MAP 8

DESIGN & LIFESTYLE

- | | | |
|----|-----------------|----|
| 41 | BeCandle | 66 |
| 46 | Lumeun Home | 71 |
| 47 | Manks | 72 |
| 48 | Sin Sin Atelier | 73 |

ARCHITECTURE

- | | | |
|----|---|----|
| 61 | HKUST Shaw Auditorium
香港科技大學逸夫演藝中心 | 87 |
| 63 | The Chinese University of
Hong Kong 香港中文大學 | 89 |

WORKSHOPS & EXPERIENCES

- | | | |
|----|-------------|----|
| 67 | LUMP Studio | 94 |
|----|-------------|----|

ACCOMMODATION

- | | | |
|----|--|-----|
| 72 | WM Hotel Hong Kong,
Vignette Collection
洲至奢選香港WM酒店 | 100 |
|----|--|-----|

FOOD & BEVERAGE

- | | | |
|----|--------|-----|
| 89 | Tamora | 118 |
|----|--------|-----|

HIDDEN GEMS

- | | | |
|-----|------------------|-----|
| 100 | Yim Tin Tsai 鹽田梓 | 132 |
|-----|------------------|-----|

Explore the City at Your Own Pace

Design your personal citywalk

5 Insiders' Picks

在地創意專家推介

Local knowledge from within the scene



Tai Ping Shan Street

太平山街

📍 Tai Ping Shan Street, Sheung Wan 🚉 Sheung Wan Station + 🚶 9 min



Dubbed ‘Hong Kong’s coolest neighbourhood’ by international media, Tai Ping Shan Street is a perfect testament to Hong Kong’s ‘East-meets-West’ narrative: located in one of the city’s oldest districts, the street still bears the marks of having been at the epicentre of the 1894 plague, from where the local term ‘cleaning the street’ originated as a consequence of the extensive death toll. Today, old and new eateries, trendy cafés and independent shops exist side by side with temples and historical landmarks, creating a unique, laid-back character. Together with Po Hing Fong, Pound Lane, Sai Street and Square Street, the quiet neighbourhood forms part of PoHo, in contrast to the more famous and commercial SoHo.

Alan Chan

Founder & Creative Director, Alan Chan Design Company,
DFA World's Outstanding Chinese Designer in 2017



‘Tai Ping Shan Street buzzes with youthful energy and creativity, blending art, culture and a unique atmosphere. Amidst hip shops, galleries, teahouses and design studios, this vibrant enclave offers a taste of Hong Kong’s hidden bohemian side – a true gem for those seeking an authentic slice of the city’s youthful spirit.’

Charmaine Chan

SCMP Design Editor



‘What’s not to love about The Murray? Its geometry and arches are handsome beyond compare. It’s also a great example of sustainable architecture and the epitome of cool, literally: the sun doesn’t hit its windows. I like thinking about the civil servants of yore working at their desks in those shaded recesses.’

The Murray

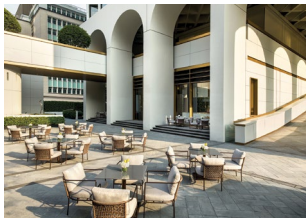
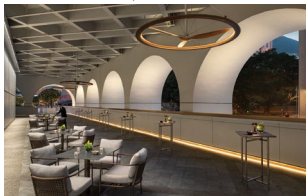
美利酒店

📍 22 Cotton Tree Drive, Central ☎ (852) 3141 8888 📱 themurrayhk

🌐 www.niccolohotels.com/en/the-murray-hong-kong 🚇 Central Station + 🚶 13 min

The Murray, Hong Kong designed in 1969 by British architect Ron Phillips as a government office, the Murray Building garnered considerable acclaim for its pioneering energy efficiency years before sustainability was a consideration. In 2018, after undergoing meticulous renovation, the 26-floor masterpiece reopened as a high-end hotel. Led by Sir Norman Foster's architectural firm, Foster + Partners, with Phillips as a consultant, the adaptive-reuse project retained distinctive features, including its arched colonnades and recessed windows, while incorporating materials such as marble and gold anodised aluminium. The Murray caters to business executives and leisure guests alike, offering a peaceful retreat in the city's financial centre. Additionally, the site celebrates a magnificent Cassia javanica tree that predates the building, adding to its charm and elegance.

*Winner of the DFA Design for Asia Awards 2018
Grand Award with Special Mention & Gold Award*





Luk Yu Tea House

陸羽茶室

📍 24 Stanley Street, Central 🕒 07:00 - 22:00 daily 📞 (852) 2523 5464 📍 lukyuteahousehk

🌐 www.lukyuteahouse.com 🗺️ Central Station + 🚶 4 min



Dining at Luk Yu, a meeting place for tycoons and literati, was once an indicator of status. Today this celebrated teahouse is more welcoming to those seeking an authentic dim sum experience. Still, good luck getting a table on the first floor, which is unofficially reserved for regulars. Luk Yu goes back several generations and old-school Cantonese dishes are still served by a white-jacket team in its three-storey stone building. Classic Lingnan decor, stained glass and Qing-style rosewood furniture contribute to a lost, colonial Hong Kong atmosphere. For those in the know (and art thieves in 1996), the prized collection of paintings, including masters such as Zhang Daqian and Zhao Shao'ang, may be the reason to visit apart from the fine pu-erh tea and excellent dim sum.

Tina Liu
Image &
Costume Director



‘With 1930s Shanghai and Guangzhou architectural details, a Lingnan-style interior and old Hong Kong’s flavoursome dim sum and classic dishes, Luk Yu, an irreplaceable landmark, is a true legend. Its 90 years of storied history are a living testament to Hong Kong’s collective memory.’

Stanley Wong, aka anothermountainman

Founder / Creative Director, 84000 Communications,
DFA World's Outstanding Chinese Designer in 2020



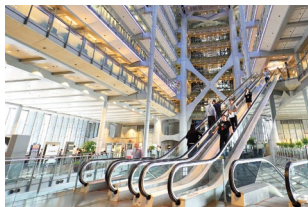
‘Norman Foster’s early work prioritised function over style, giving rise to a distinct aesthetic. HSBC’s design offers a unique spatial experience for staff, customers and the public. To immerse yourself fully, take the escalators to the second and third floors, where transparent lifts and an open plaza await. It’s more than a bank; it’s a daring and confident experiment in public space.’

HSBC Main Building

香港滙豐總行大廈

📍 1 Queen's Road Central, Central 🌐 www.hsbc.com.hk 🚇 Central Station + 🚶 1 min

It's fair to say that Sir Norman Foster's work is often representative of Hong Kong's development, and their intertwined trajectory begins with HSBC Main Building. The ground-breaking skyscraper, designed in 1978 and completed in 1985, was a departure from the previous headquarters' colonial grandeur, and as his studio's first overseas project it established Foster as a global brand. The brief was to create 'the best bank building in the world' and through a process of questioning and challenging – and recruiting a feng shui master – a hi-tech masterpiece with a striking steel 'exoskeleton' was born. A mirrored 'sun scoop' reflects sunlight through the full-height atrium to the open plaza at ground level, boosting energy efficiency and creating a sheltered space, which becomes a lively public spot at weekends. From the plaza, escalators rise through the glass to the banking hall, a dramatic experience that allows you to enter the 'shop window for banking'.





iStock.com/CHUNYIP WONG

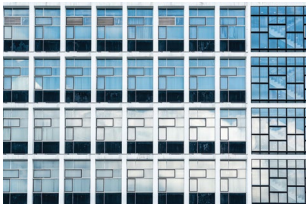
Hong Kong City Hall

香港大會堂

📍 5 Edinburgh Place, Central 🕒 09:00 - 23:00 daily 📞 (852) 2921 2840

🌐 www.lcsd.gov.hk/en/hkch 🗺️ Central Station + 🚶 7 min

iStock.com/winhorse



iStock.com/CHUNYIP WONG

Officially opened in 1962, this multi-purpose complex was the first genuinely public cultural centre for the community of Hong Kong. Occupying a reclaimed seafront plot, it consists of a Low Block (with Concert Hall, Theatre and Exhibition Hall) and a High Block (featuring the first public library and art museum in Hong Kong) connected by covered passageways and with a World War II memorial garden in between. Professor Gordon Brown and British architects Ron Phillips and Alan Fitch envisaged a minimal, modernist building representative of the popular International Style of the day, with granite, glass and whitewashed concrete. Ascend the sun-filled staircases beside big grid windows and you will discover a rare sense of tranquillity offered by straightforward, streamlined architecture in the heart of the city.

Prof Eric Yim
Chairman,
Hong Kong Design Centre



‘Hong Kong City Hall, a Modernist architectural marvel and a cultural icon, symbolises the birth and growth of culture in the city. It stands as a testament to Hong Kong’s enriched cultural life and improved living standards. While newer facilities like M+, Hong Kong Palace Museum and Tai Kwun shine, City Hall remains a vital player in Hong Kong’s cultural scene.’

11 Culture & the City

感受城市文化

*Galleries, institutions
and public spaces that
inspire and reward*



West Kowloon Cultural District

西九文化區

📍 West Kowloon Cultural District, Kowloon ☎ (852) 2200 0217 (general enquiries)

📘📷 westkowloon 🌐 www.westkowloon.hk

Undoubtedly one of the largest and most ambitious cultural projects in the world, the West Kowloon Cultural District stretches across 40 hectares of reclaimed land on a dramatic harbourfront site in the heart of Hong Kong. Based on designs by Foster + Partners and with a mixture of theatres, performance spaces and museums,

the West Kowloon Cultural District produces and hosts world-class exhibitions, performances and cultural events, providing 23 hectares of public open space, including a two-kilometre waterfront promenade. Below are the major arts and cultural venues you must not miss!



Courtesy of West Kowloon Cultural District Authority

M+

🕒 Tue - Thur & weekends 10:00 - 18:00
 Fri 10:00 - 22:00

Mon closed (The museum is open on all public holidays unless they fall on a Monday.) The last admission time is 30 minutes before closing.

🌐 www.mplus.org.hk

🚇 Kowloon Station / Austin Station +

🚶 10 min / 15 min

As Asia's first global museum of contemporary visual culture, M+ is dedicated to collecting, exhibiting and interpreting 20th- and 21st-century visual art, design and architecture, and moving images, as well as Hong Kong visual culture. Its world-class collections, including the M+ Collection, an interdisciplinary collection of visual culture and the M+ Sigg Collection, one of the largest and most comprehensive compilations of contemporary Chinese art in the world, are housed in a Herzog & de Meuron-designed building.

6A



Courtesy of M+, Hong Kong

The M+ building is composed of a horizontal podium (including but not limited to 17,000m² of exhibition space) and a slender tower (offices, lounge, restaurants, a university's off-campus learning hub), forming an upside-down 'T'. An LED lighting display system is integrated into the facade towards Victoria Harbour, serving as another canvas of moving-image works to mesmerise viewers far and near.

Winner of the DFA Design for Asia Awards 2022 Grand Award

6B



Courtesy of West Kowloon Cultural District Authority

Xiqu Centre

戲曲中心

🕒 10:00 - 22:30 daily

🌐 www.westkowloon.hk/xiqucentre

🚇 Austin Station / Jordan Station +

🚶 1 min / 15 min

The Xiqu Centre is a world-class performing arts venue in Hong Kong dedicated to promoting and developing the heritage art of traditional Cantonese opera and regional forms of Xiqu. It introduces performances from Hong Kong, Mainland China and around the world and presents specially curated introductory performances, experimental contemporary creations, film screenings, musical performances, educational activities and more.

Designed by Revery Architecture and Ronald Lu & Partners, the Xiqu Centre's striking form, reminiscent of a lantern shimmering behind a beaded stage curtain, blends elements of traditional and contemporary Chinese architecture. The Xiqu Centre was named one of 'The World's 100 Greatest Places' by TIME magazine in 2019.

Winner of the DFA Design for Asia Awards 2019 Grand Award

Hong Kong Palace Museum

香港故宮文化博物館

🕒 Mon, Wed, Thur & Sun 10:00 - 18:00, Fri, Sat & public holidays 10:00 - 20:00, closed on Tuesdays (except public holidays) and first two days of Lunar New Year. Ticketing counter shuts one hour before closing.

🌐 www.hkpm.org.hk

🚗 Kowloon Station / Austin Station +

🚶 10 min / 15 min



© Hong Kong Palace Museum

6C

Promoting an appreciation of Chinese art and culture and advancing dialogue among world civilisations, with a global vision from a Hong Kong perspective, the museum features more than 900 priceless treasures on loan from the Palace Museum in Beijing, plus the finest exhibits from other leading cultural institutions around the world.

The work of Rocco Design Architects, the building is a contemporary interpretation of traditional architecture and aesthetics, with a Forbidden City-inspired vertical central axis. Its golden exterior panels create the effect of glazed tiles and its undulating bronze ceiling draws in light from above.

Freespace

自由空間

🌐 www.westkowloon.hk/freespace

🚗 Kowloon Station / Austin Station +

🚶 10 min / 15 min



6D

Freespace is Hong Kong's new centre for contemporary performance in the heart of the West Kowloon Art Park. It presents multi-genre performances and events, produces boundary-pushing collaborations and promotes new ways of seeing and experiencing performances. Freespace consists of The Box, a flexible space for cutting-edge performances and one of the largest black box theatres in Hong Kong. It also consists of The Room and The Studio, multi-purpose spaces designed for creative exchange and artistic collaborations, and Lau Bak Livehouse, an intimate bar, restaurant and performance space.

Courtesy of West Kowloon Cultural District Authority



Asia Art Archive

亞洲藝術文獻庫

📍 11/F, Hollywood Centre, 233 Hollywood Road, Sheung Wan 🕒 Mon – Sat 10:00 – 18:00
 (closed on public holidays) ☎ (852) 2844 1112 🌐 @asiaartarchive 🌐 www.aaa.org.hk
 🚶 Sheung Wan Station + 🚶 8 min



An independent non-profit organisation, Asia Art Archive (AAA) was co-founded by Claire Hsu and Johnson Chang in response to the urgent need to document and make accessible the multiple recent histories of art in the region. AAA now hosts one of the most comprehensive and publicly accessible collections of research materials in the field. A catalyst for new ideas about contemporary art in Asia, AAA is dedicated to the collection, creation and sharing of knowledge through its educational, residency and research grant programmes. Forty-nine research collections, including the Ha Bik Chuen Archive, Manila Artist-run Spaces Archive and Ellen Pau Archive are accessible free at its Sheung Wan library and searchable online.

*Asia Art Archive library.
 Courtesy of Moving Image Studio.*

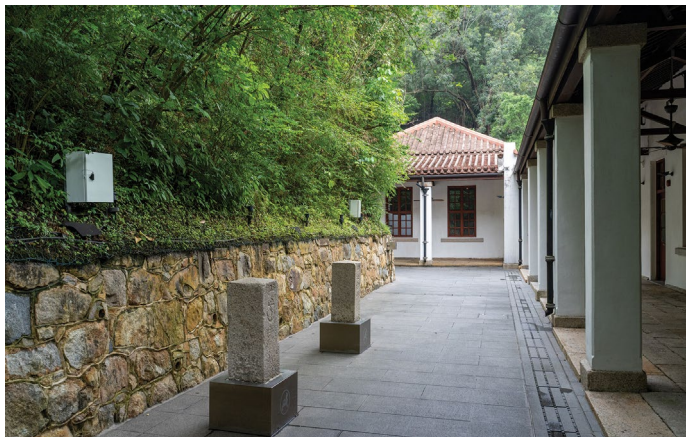
Asia Society Hong Kong Center 亞洲協會香港中心

📍 9 Justice Drive, Admiralty 🕒 11:00 - 18:00 daily (except Mon) ☎ (852) 2103 9511

📍 asiasocietyhongkong 📷 asiasocietyhk 🌐 www.asiasociety.org/hong-kong

🚗 Admiralty Station + 🚶 7 min

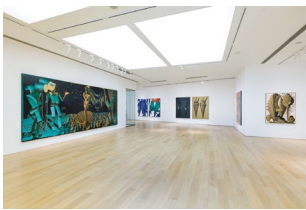
Built on the steep slope of a former explosives magazine at the Victoria Barracks and designed by Tod Williams Billie Tsien Architects, this 1.3-hectare venue is a beacon of Asian history, society, culture and arts, offering a variety of lectures, performances, film screenings, exhibitions and heritage tours. A zigzag footbridge connects the complex's upper and lower sites, created through preservation, adaptive reuse and new construction. Facilities include the Old Laboratory (built in 1860), a multi-function hall and theatres with indoor and outdoor artworks (including an infamous Antony Gormley), making it an urban sanctuary for quiet contemplation and dramatic, contrasting views.





H Queen's

📍 80 Queen's Road Central, Central 📞 (852) 2343 1738 📱 hqueenshk
 🌐 www.hqueens.com.hk 🗺️ Central Station + 🚶 4 min



Located in the heart of Central, H Queen's is one of the world's first purpose-built vertical galleries. Combining art and F&B spaces for a unique lifestyle experience, the sleek, shimmering structure was designed by local architecture firm CL3 and its principal, William Lim, a keen art collector. His insights led to features such as a floor-to-floor height of 4.65m to accommodate large-scale pieces, floor-to-ceiling glazing to make art visible from the ground and surrounding buildings, and enormous sliding windows that serve as both energy-savers and urban theatre when craning up bulky artworks. The 24-storey art hub is now home to international galleries David Zwirner, Pace Gallery, Tang Contemporary Art and Whitestone Gallery.

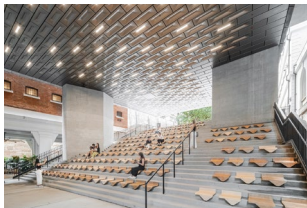
Tai Kwun

大館

📍 10 Hollywood Road, Central 🕒 08:00 - 23:00 daily 📞 (852) 3559 2600 🌐 taikwunhk
 📍 taikwun.hk 🌐 www.taikwun.hk 🗺️ Central Station + 🚶 11 min

An appealing revitalisation of three Declared Monuments – the former Central Police Station, Central Magistracy and Victoria Prison – Tai Kwun was realised by The Hong Kong Jockey Club in partnership with the Hong Kong SAR Government, with the aim of creating an attraction focused on arts, culture and heritage. Along with Rocco Yim as executive architect and conservation architects Purcell, Swiss powerhouse firm Herzog & de Meuron also worked on two new additions: JC Contemporary and JC Cube, where contemporary art exhibitions are staged. An Award of Excellence winner at the 2019 UNESCO Asia-Pacific Awards for Cultural Heritage Conservation, this cultural heart is also known for its vibrant F&B scene and eclectic shops and galleries, with visitors now strolling the Parade Ground, where police officers conducted drills, and the Prison Yard, where inmates exercised.

Winner of the DFA Design for Asia Awards 2018
 Grand Award





Oi!

油街實現

📍 2 Oil Street, North Point 🕒 Mon: 14:00 – 20:00, Tue – Sun: 10:00 – 20:00 📞 (852) 2512 3000
 📷 @oilstreetartspace 🌐 www.apo.hk 🗺️ Fortress Hill Station + 🚶 3 min

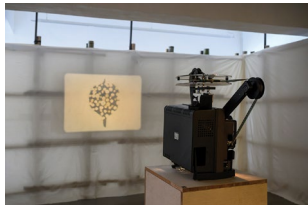


In 2013 the former clubhouse of the Royal Hong Kong Yacht Club – a red-brick Grade II historic building tucked away in a quiet pocket of busy North Point – was given a new lease of life as art oasis Oi! With a mission to promote community engagement through art and the nurturing of young artists, the space is known for its cross-disciplinary and experimental projects that often bridge art and society. A new extension was opened to the public in 2022, providing more than 3,000m² of open space for large-scale, outdoor installations and performances and a two-storey building for exhibitions and multi-purpose functions.

Para Site

📍 22/F, Wing Wah Industrial Building, 677 King's Road, Quarry Bay 🕒 Wed - Sun 12:00 - 19:00
 (except public holidays) 📞 (852) 2517 4620 🌐 @parasite.hk 🌐 www.para-site.art
 🚶 Quarry Bay Station + 🚶 3 min

Since 1996, the city's first artist-run space, Para Site – now led by Executive Director and Curator Billy Tang – has championed art from Hong Kong and the wider region, and supported emerging artists and curators. The city it calls home has always been an integral part of the institution's DNA, with exhibitions such as 'A Journal of the Plague Year. Fear, Ghosts, Rebels. SARS, Leslie and the Hong Kong Story' chronicling Hong Kong's alternative history through the lens of art. The non-profit cultural centre has a busy programme of around 10 exhibitions a year, as well as seminars, guest talks, workshops, residency programmes and bilingual publications.



Installation views of 'Offerings for Escalante', by Enzo Camacho and Ami Lien, Para Site, Hong Kong, 2023. Photo: Studio Lights On.



HKALPS & VESSEL

香港藝士民間及發現號

📍 126, 90 and 86 Hoi Bun Road, Kwun Tong 📞 (852) 3612 4563 / 3618 4468 📱 @vessel.hk

🌐 www.vessel.org.hk 🗺️ Ngau Tau Kok Station / Kwun Tong Station + 🚶 10 min / 19 min



The only creative platform in Hong Kong found under a bridge, HKALPS & VESSEL comprises a semi-covered, 8,360m² space across three sites, with converted shipping containers (Vessels 01, 02 and 03) hosting arts and cultural activities, community services, social projects, urban farming and sports activities. Located along the scenic Kwun Tong Promenade and under the Kwun Tong Bypass, it offers a chance to join a vibrant harbourfront community simply by engaging in a cooking workshop, activity or exhibition, or just by taking a leisurely stroll, enjoying a bite at the adjacent restaurant and people watching.

Art and Culture Outreach

艺鹄 ACO

📍 14/F, Foo Tak Building, 365-367 Hennessy Road, Wan Chai 🕒 13:00 - 19:00 daily (except Mon) ☎ (852) 2893 4808 📱 @artandcultureoutreach 🌐 www.aco.hk

🚇 Causeway Bay Station / Wan Chai Station + 🚶 6 min / 10 min

ACO is an art and cultural space, bookshop, indie publisher and event space all in one. As well as selling serious English and Chinese publications on contemporary art and culture, ACO has taken up part of the work of turning the Foo Tak Building into an affordable depot for all things creative: a number of independent cultural organisations, artist residency programmes and indie select/bookshops have taken their initial steps there. For those who crave a friendly environment to discuss and explore alternative topics, this is your place.





f22 foto space

f22攝影空間

📍 Shops W16 & W18 and Shops BW11 & BW 13, The Peninsula Arcade, Salisbury Road, Tsim Sha Tsui

🕒 Tue - Sun 11:00 - 19:00 📱 f22fotospace 🌐 www.f22.com

🚶 Tsim Sha Tsui Station / East Tsim Sha Tsui Station + 🚶 3 min / 1 min



Building on the success of F11 Foto Museum – a private institution in a restored three-storey building from the 1930s – photography enthusiast and collector Douglas So created f22 foto space, a photo gallery, vintage camera shop and Leica mecca all in one. The 1920s-inspired decor is the work of local studio LAAB Architects, who created a modern art deco interior with an ambience akin to that of British private clubs by using dark hardwood, elegant mouldings and bespoke brass details. On display are some of the rarest and finest cameras and lenses from around the world, the huge, 24K gold-plated Fake Leica sculpture by Chinese artist Liao Yibai, and curated photo exhibitions honouring local heroes and international stars such as James Chung, Elliott Erwitt and Marc Riboud.

kubrick

📍 Shop H2, Cinema Block, Prosperous Garden, 3 Public Square Street, Yau Ma Tei
 (other location: Tai Koo) 🕒 11:30 - 22:00 daily 📞 (852) 2384 8929 🌐 @ kubrick.hk.2001
 🌐 www.kubrick.com.hk 📍 Yau Ma Tei Station + 🚶 4 min

This comfy bookstore offers a good range of art and design, travel and cookery books, speciality magazines, novels and more, a selection that reflects the position of the indie publishing house under the same name. Located next to Broadway Cinematheque, a long-standing arthouse cinema, kubrick is a mainstay among not only bibliophiles but also cinephiles: the shop is also well-stocked in film books and discs. With a connecting café offering pasta and light dishes, it attracts a creative crowd that like to chill out while waiting for the next movie, or lose themselves among pages, coffee in hand.



9 Creative Landmarks

凝聚創意熱點



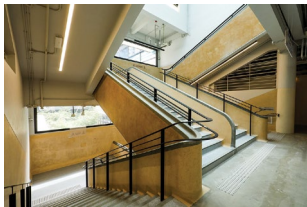
Central Market

中環街市

📍 93 Queen's Road Central and 80 Des Voeux Road Central, Central 🕒 10:00 – 22:00 daily
 ☎ (852) 3618 8688 📱 centralmarketkh 🌐 www.centralmarket.hk
 🚶 Central Station + 🚶 6 min

Winner of the DFA Design for Asia Awards 2022
Bronze Award

Once the largest meat market in Southeast Asia, Central Market has been reincarnated as a retail and F&B 'Playground for All' under the same name. The building itself dates back to 1939 and is an example of the Bauhaus and Streamline Moderne styles of the time. A decade in the recasting, the revitalised Grade III historic building is now invigorated, with the original terrazzo grand staircase upgraded to welcome visitors. Cleverly, the stall layout, red lamps and wayfinding designs all evoke the traditional wet market, now with a modern twist. In addition to shopping amid nostalgia, visitors can enjoy a tantalising range of food and beverages at the outdoor atrium, or catch an open forum, exhibition or cultural performance at the multifunctional event space.





PMQ 元創方

📍 35 Aberdeen Street, Central 📍 Studios & Shops:* 12:00 - 19:00, Cafés and Restaurants:* 09:00 - 23:00 ☎ (852) 2870 2335 📍 pmqhk 📍 pmqhkdesign 🗣 PMQHONGKONG
 小红书 PMQ元創方 🌐 www.pmq.org.hk 📍 Central Station / Sheung Wan Station / Hong Kong Station + 🚶 13 min / 10 min / 16 min

Winner of the DFA Design for Asia Awards 2015
 Grand Award



With more than a century of history and counting, the PMQ site first served as the Central School's campus in 1889, then as the dormitory for rank-and-file police officers in 1951 and now as a landmark to nurture local designers. Since its launch as a creative hub in 2014, PMQ has been home to more than 100 local young create-preneurs, with workshops and studios featuring lifestyle, fashion and accessories, architecture, product design, furniture and a wide range of other designer goods. With the annual design festival deTour as its flagship event, celebrating local and international creativity, it is also a venue of choice for art and cultural events from Hong Kong and around the world.

**For further information on the opening hours of individual studios and shops, please visit the corresponding pages on this website.*

AIRSIDE

📍 2 Concorde Road, Kai Tak 🕒 10:00 - 22:00 daily 📞 (852) 2686 0333

📱📷 airsidehk 🌐 www.airside.com.hk 🗺️ Kai Tak Station Exit C

Snøhetta's largest project in Hong Kong is an impressive combination of sustainable design and placemaking, including generous public spaces dedicated to art and culture. On the site of the former Kai Tak Airport, the 47-storey mixed-use complex is the first in Hong Kong to receive seven of the most recognised green and smart-building certifications. The gently curved, fluted glass facade is evocative of the developer's – and Hong Kong's – historical associations with textiles, a motif echoed in the interior and landscape design. As well as a plethora of retail and F&B options, the 66,000m² mall includes a monumental landscape painting by local artist Stephen Wong Chun Hei, an enormous vertical garden and atrium walls clad with materials boasting excellent acoustic, maintenance and antibacterial characteristics: the copper-hued fabrics were upcycled from plastic bottles.





D2 Place

📍 9 Cheung Yee Street & 15 Cheung Shun Street, Lai Chi Kok 🕒 10:00 - 22:00 daily

☎ (852) 3620 3098 / 2557 7988 📱📷 D2Place 🌐 www.d2place.com

🚉 Lai Chi Kok Station + 🚶 2 min



It may look like just another Hong Kong shopping mall, but some would argue that D2 is unique. Epitomising the city's industrial-building revitalisation movement, the mall comprises two buildings – D2 One and D2 Two – conveniently located in an industrial area that was formerly Hong Kong's garment hub. An unmistakably youthful, creative vibe means it's perfect for those looking for an alternative shopping experience – expect no chain stores or high-street names, only the niche and original. Its popular weekend market (think indoor flea market) is a shopping haven as well as the debut stage for aspiring local makers and designers. A food court, range of casual eateries, cinema and rooftop garden mean you should prepare to lose yourself for a long time.

JCCAC

賽馬會創意藝術中心

📍 30 Pak Tin Street, Shek Kip Mei 📞 (852) 2353 1311 🌐 jccacpage
 📍 jccac_artsvillage 🌐 www.jccac.org.hk 📍 Shek Kip Mei Station + 🚶 7 min

Jockey Club Creative Arts Centre – better known as JCCAC – is an award-winning architectural conversion and the first factory turned vertical artist village and arts centre in Hong Kong. Remnants of Hong Kong’s cottage industry, which powered its industrial past, can still be seen in its corridors and public spaces. It is where 140 artists and organisations have set up studios to pursue assorted, mainly visual arts practices, including painting, sculpture, ceramics, glass art, printmaking and photography. While the teahouse, café and some galleries open daily, visitors may want to browse JCCAC’s activity programme before paying a visit – apart from an array of changing exhibitions, guided tours and workshops, the hugely popular weekend craft fairs held just several times a year should not be missed!





The Mills

南豐紗廠

📍 45 Pak Tin Par Street, Tsuen Wan 🕒 10:00 – 22:00 daily 📞 (852) 3979 2300 📱📷 themillshk
 🌐 www.themills.com.hk 🗺️ Tsuen Wan Station / Tsuen Wan West Station + 🚶 12 min / 22 min

Winner of the DFA Design for Asia Awards 2019 Grand Award, Grand Award for Sustainability & Gold Award



A remnant of Hong Kong's flourishing 1960s textiles industry, The Mills is the former Nan Fung Textile factory complex, now revitalised as a creative destination where textiles themes are woven into experiences of innovation, culture and learning. The 24,530m² space comprises three major components: Shopfloor, showing the work of local talent and giving shoppers a taste of artisan dining and maker culture; CHAT, a non-profit cultural institution exploring textiles in artistic expression via exhibitions and co-learning programmes; and The Mills Fabrica, a platform accelerating techstyle and innovations for sustainability with an incubation programme, co-working space, prototyping lab and retail store. With its inviting open spaces, vibrant energy and pet-friendliness, it's no wonder The Mills has quickly become a favourite creative hub among culture lovers. Don't forget to explore the various murals to add zig to your Instagram feed.

Lee Tung Avenue

利東街

📍 200 Queen's Road East, Wan Chai 📞 (852) 3791 2304 📱 @leetungavenue
 🌐 www.leetungavenue.com.hk 🚉 Wan Chai Station + 🚶 5 min

Formerly known as 'Wedding Card Street', where locals once shopped for traditional banquet invitations, this area has been reincarnated as a public open space with a dazzling array of pavement cafés, laid-back restaurants and premium shops. Inspired by the streetscape of 1950s Wan Chai and designed by Ronald Lu & Partners, the tree-lined, stone-paved pedestrian walkway is perfect for strolling and exploring against a European-style backdrop. It's also home to festive installations and artsy collaborations, with a roll-call of talent that includes the likes of artist Luke Jerram and composer Yusuke Hatano. Occasionally, constellations of Chinese lanterns appear to brighten moods and social media feeds.





Harbour City 海港城

📍 3-27 Canton Road, Tsim Sha Tsui 📞 (852) 2118 8666 📱📷 harbourcity
 🌐 www.harbourcity.com.hk 🗺️ Tsim Sha Tsui Station + 🚶 5 min



As well as being an outstanding shopping destination, Harbour City also advocates creativity. Its devoted art team uses Gallery by the Harbour – a dedicated white cube space – and various atria and harbour-view outdoor spaces to create an all-encompassing art experience, right alongside its world-class retail and F&B offerings. Previously on show were international names such as JR, Yue Minjun and Cracking Art, local and emerging talents such as Li Chi Tak, Yeung Hok Tak and Kila Cheung, and crowd favourites such as Takada Akemi, Le Petit Prince and BE@RBRICK. There's something arty here for visitors of all ages to enjoy – try hunting down the 18 mosaic 'art invasions' by the infamous French urban artist Invader dotted around the expansive mall.

K11 MUSEA

📍 18 Salisbury Road, Tsim Sha Tsui 🕒 10:00 - 22:00 daily 📞 (852) 3892 3890
 📱 📷 K11MUSEA 🌐 k11musea.com 🗺️ East Tsim Sha Tsui Station Exit J1 & J2

A cultural-retail hub and ‘muse by the sea’, K11 MUSEA is the result of the collaborative efforts of 100 Creative Powers, an international group of more than 100 architects, artists, craftspeople, conservationists and designers. Notable were Kohn Pedersen Fox (architects of the 10-storey mall), James Corner Field Operations (landscape and streetscape, including a world-class promenade and urban theatre), LAAB Architects and Speirs + Major (collaborators on the Opera Theatre, a mesmerising galaxy of stars featuring unique, hand-painted panels and 1,800 programmed lights) and entrepreneur Adrian Cheng, who orchestrated the 10-year project. The creative destination is family friendly, so expect to be inspired and entertained by a roster of illustrious brands and exciting eateries, with museum-worthy artworks hanging from the ceiling, in various installations, on the walls ... or even disguised as seating.



29 Design & Lifestyle

觸得到的生活設計態度



*Your curated
guide to shopping
for a good life*

André Fu Living

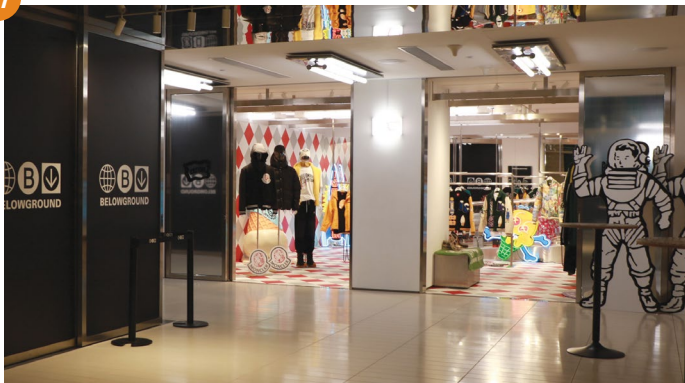
📍 Shop 355, Level L3 Pacific Place II, 88 Queensway, Admiralty (other location: Elements)

🕒 10:30 - 20:00 daily 📞 (852) 3689 0161 / (852) 9019 6379 📱 andrefuliving

🌐 www.andrefuliving.com 🗺️ Admiralty Station + 🚶 5 min

André Fu Living [AFL] marks architect André Fu's foray into a world of lifestyle offerings that go beyond his spatial creations. 'It is not about imposing a lifestyle, it is a personal expression of living,' says Fu. The brand seeks to celebrate the notion of lifestyle with a multi-category collection, from tableware to bed linens to furniture and decorative lighting. The collection celebrates Fu's personal life and taps into his exploration of a world that embraces his design language of relaxed luxury.





BELOWGROUND

📍 Basement, 15 Queen's Road Central, LANDMARK 🕒 11:00 - 20:00 daily

🌐 belowground.hk 🌐 www.belowground.hk 🗺️ Central Station Exit G



Many are seeking the path to future retail, and LANDMARK, the city's luxury shopping destination, is among them. Their vision is BELOWGROUND, a hybrid cultural-retail concept in the mall's basement. The experience-led initiative aims to 'break the boundaries of contemporary retail' by fusing fashion, art, design, music and culture – street and pop culture in particular – within a 557m² space reimaged by London design studio Brinkworth. From retail pop-ups and food kiosks to showcases of up-and-coming artists, its rotating curation of brands and exhibitions is enough to entice repeat visits from the hip and happening crowd.

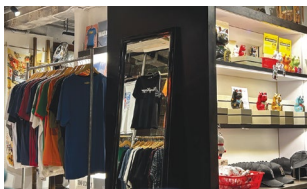
Goods of Desire (G.O.D.)

住好啲

📍 G/F & M/F, 6 D'Aguilar Street, Central (other locations: Hollywood Road, Central; Sai Kung; Hong Kong International Airport) 🕒 Mon - Sun 10:00 - 20:00 ☎ (852) 2890 5555

📱 @goodsordesire 🌐 www.god.com.hk 📍 Central Station + 🚶 2 min

Founded in 1996 by Douglas Young, this lifestyle design and retail brand is known for tongue-in-cheek interpretations of Hong Kong culture. Originally a small boutique in Ap Lei Chau and now a multifaceted international retailer, it has a distinct sense of humour that has resulted in some of the city's most recognisable 'souvenirs'. Characteristic of the brand are lifestyle objects, fashion and household accessories adorned with images of traditional letterboxes, neon lights, dense buildings and more. Channelling the East-meets-West, new-meets-old energy of the city, the everyday is transformed by the extraordinary in the spirit suggested by the name: G.O.D. is a homophonic translation of the Cantonese brand name, which literally means 'to live better'.





HINT.

📍 Shop A, G/F, Tung Cheung Building, 1-11 Second Street, Sai Ying Pun 🕒 Wed - Sat
 14:00 - 19:00 (please refer to Instagram for latest updates) 📷 [hint.concepts](#)
 🌐 www.hintconcepts.com 🗺️ Sai Ying Pun Station + 🚶 2 min



Interior design studio Hintegro's Keith Chan forayed into retail with HINT., a petite store filled with aesthetically and functionally pleasing finds, handpicked by him and his team. The evolving range of affordable and timeless household items is mostly made in Japan or Hong Kong and exudes the same quality as his interior projects. Interesting finds include Japanese lacquerware, ceramics by Japanese workshop One Kiln (which enjoys a cult following) and copperware by Yamaguchi Kyujo, founded more than a century ago. Design discussions are held regularly on topics such as the relationship between design and coffee culture.

KEF Music Gallery

📍 12/F, 1 Duddell Street, Central 🕒 Mon - Sat 10:30 - 19:30, Sun 12:00 - 18:00

📱 KEF.HK 📷 kef.hongkong 🌐 www.hk.kef.com 📍 Central Station + 🚶 5 min

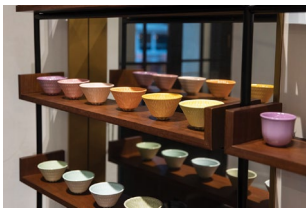
You don't have to be a hi-fi connoisseur to appreciate this next-generation experience centre, where sound meets art. Radiating the exclusive yet welcoming feeling of a private clubhouse, Conran and Partners' design celebrates the individual experience of music, displaying the British brand's sonic capabilities in a technically perfect acoustic setting. Atlantic stone, brass and walnut set the tone for your journey, while an impressive selection of vintage modernist furniture and contemporary artworks by stars such as Toshio Shibata, Julian Opie, Luke Shadbolt and Nancy Chu Woo completes the adventure. Don't forget to check out The Collector's Lounge, where digital art collective teamLab created a sensory experience with immersive 3D effects and high-resolution music.





Loveramics

📍 Shop 104, Barrack Block, Tai Kwun, Central 🕒 Sun - Thur 11:00 - 19:00,
 Fri - Sat 11:00 - 20:00 ☎️ (852) 2884 0003 📱📷 loveramics 🌐 www.loveramics.com
 🗺️ Central Station + 🚶 11 min



This is your destination for quality ceramic tableware and kitchenware with a dash of local flair – breaking the bank not required. With a shop in Paris and wholesaling in Europe and the USA, Loveramics offers internationally recognised craftsmanship. Marvel at the collection of themed, colourful mugs, teapots, coffee accessories and cutlery, with the added fun of coordinating or mixing and matching. The classic collection and designer-collaboration pieces make delightful souvenirs, or instantly spruce up any table or countertop. The homegrown brand promotes sustainable manufacturing, with water recycling facilities and recyclable, reusable packaging.

Objective Lifestyle Shop

📍 G/F, 50 Sai Street, Sheung Wan 🕒 Mon - Fri 11:00 - 18:00 (by appointment)
 📞 objectivehk 📷 objective_hk 🌐 www.obj.com.hk 🗺️ Sheung Wan Station + 🚶 8 min

This select shop is a lifestyle extension of Studio Adjective, a local design practice specialising in interiors and associated products. Tucked away on a hillside street, it has a minimalist interior reflecting the tastes and design journey of founders Wilson Lee and Emily Ho. Featured furniture includes the elegant, three-legged stool made in collaboration with Japanese furniture workshop Ishinomaki Laboratory, for whom they are the sole distributor. This unique curation includes delightful glass and ceramic creations from Copenhagen-based Studio Arhoj, the duo's handmade ceramic work under the Wilson Emho Ceramics brand, and a range of homeware and skincare products. Ho and Lee hope their selections will open a path to a simpler way of life.





Pedder Arcade

📍 5/F, Pedder Building, 12 Pedder Street, Central 🕒 Mon - Sat 11:00 - 19:30, Sun 12:00 - 18:00

☎ (852) 2804 6991 📱 pedder.arcade 📷 pedderarcade 🌐 www.thepedderarcade.com

🚗 Central Station + 🚶 1 min



Visiting the Palmer & Turner-designed Pedder Building, completed in 1924, has always been an extraordinary experience, for the influential art galleries within, as well as its Grade II historical architecture. The recent launch of Pedder Arcade on the fifth floor upped the game, with a new retail concept that puts a contemporary twist on the European shopping arcade tradition. Designed and curated by dapper bespoke tailoring expert The Armoury and Katherine Wong Design, this urban shopping sanctuary is set amid high ceilings and graceful, arched windows and features The Armoury, naturally, as well as cashmere brand Drumohr, clothing label Nigel Cabourn, Davidoff cigars and Phillips Perpetual (a new concept by the international auction house for instant purchases of collectors' timepieces). There is also a café called JK on the Fifth, in homage to Jimmy's Kitchen.

Qeelin

📍 Shop 120, 1/F, Landmark Prince's, Central (other locations: IFC, Elements, Harbour City, Times Square, Sogo) ⌚ 10:30 - 19:30 daily 📱📷 qeelinjewellery 🌐 www.qeelin.com

🚶 Central Station + 🚶 1 min

This fine jewellery house was put on the map when actress and icon Maggie Cheung adorned her outfits with a Wulu necklace. The humble Chinese gourd has been the brand's signature motif ever since. Founded by Dennis Chan after a spiritual trip to Dunhuang's Mogao Caves in 1997, the brand is synonymous with playful fusions of Oriental symbolism and modernity, infusing Chinese heritage with new life and meaning. Emblems such as Qilin (an auspicious mythical animal), Yu Yi (Chinese for 'dreams come true') and panda Bo Bo (boasting a moveable head and limbs and changeable outfits) all come alluringly alive, thanks to a unique blend of exquisite craftsmanship and innovative technology. The homegrown brand is now part of the global luxury group Kering, with outposts all over the world.





SLOWOOD

📍 Shop 2-3, G/F, The Hudson, 11 Davis Street, Kennedy Town (other locations: Central, Sha Tin)

🕒 11:00 - 21:00 daily 📞 (852) 2818 0203 📌 slowood 📱 slowood.hk 🌐 www.slowood.hk

🚶 Kennedy Town Station + 🚶 2 min



Traditional grocers aside, SLOWOOD is the pioneer of naked shopping in Hong Kong. The lifestyle and grocery concept's founding store in Sai Wan allows you to shop in a soothing, sunlit environment of white walls, earth-toned shelves and floor-to-ceiling glazing. Recycled, biodegradable, zero-waste and ecologically friendly are key terms here. Bring your own containers and purchase daily essentials such as cleaning supplies, sweets and snacks at the refill station. With a wide selection of sustainable foods, personal care, household, lifestyle and skincare alternatives, eco-living has never been this easy or stylish.

Julie & Jesse (Latitude 22N)

📍 Unit 16B, Man Foong Industrial Building, 7 Cheung Lee Street, Chai Wan (by appointment)
 ☎ (852) 2480 1182 📱📷 julieandjesse / latitude22n 🌐 www.juliejesse.com / latitude22n.com
 🚶 Chai Wan Station + 🚶 1 min

In 2008, Swiss designer Julie Progin and American artist Jesse Mc Lin co-founded Latitude 22N. The porcelain and paper goods brand captures the artistic voyage of their lives in Hong Kong and study trips to Jingdezhen, the centre of China's porcelain industry, where they worked with local artisans to create bespoke products and artworks. One example is Fragment(s), a series of vessels that brings new life to the discarded ceramic production moulds they collected in the city. Enter their lofty studio in Chai Wan and you will first encounter a gallery space dedicated to their limited-edition artworks, created under the name Julie & Jesse; then, beyond sliding doors, a space for their elegant and Hong Kong-inspired Latitude 22N products.





Classics Anew

新裝如初

📍 G17-18, Ko Shan Theatre New Wing, 77 Ko Shan Road, Hung Hom 🕒 13:00 - 20:00 daily
(by appointment) ☎ (852) 2562 7478 / 5630 7235 📍 ClassicsAnew

📱 @classics_anew / classics_anew_academy 🌐 www.classicsanew.com

🚶 To Kwa Wan Station + 🚶 10 min



Fashion designer Janko Lam made her name by using recycled fabrics to reinterpret cheongsam and qipao and bring traditional Chinese dresses into the 21st century. Organic cotton, linen, denim and silk in neutral hues are woven and shaped into designs perfect for everyday comfort. Visit her shop – appropriately located in a theatre dedicated to Chinese opera – to experience how traditional details are crafted into modern silhouettes and textures. The sustainable fashion brand also set up a Classics Anew Academy to champion the heritage and history of Chinese fashion. Join its courses and workshops to create your own traditional pieces, such as cheongsam dresses and fabric flower buttons.

TOKI NASHIKI

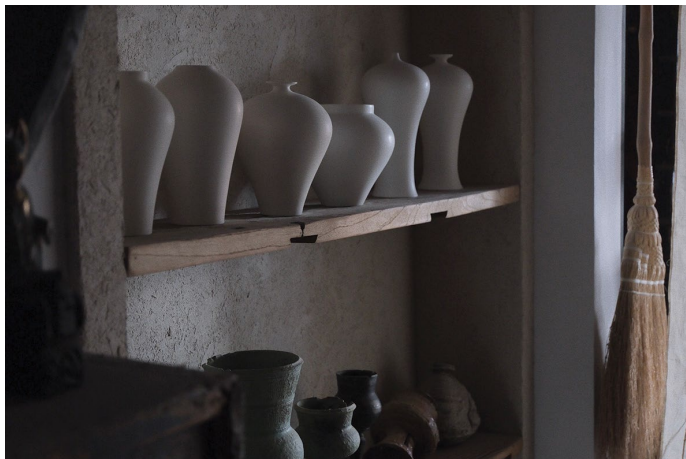
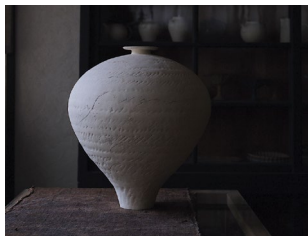
梨木製陶所

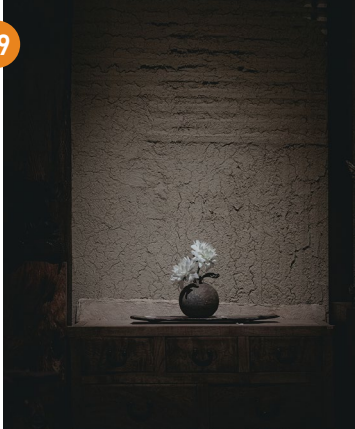
📍 Flat P, 5/F, Block 1, Kingswin Industrial Building, 32-50 Lei Muk Road, Kwai Chung

🕒 Thur - Sat 14:00 - 21:00 (by appointment) 📞📷 tokinashiki

🚗 Kwai Hing Station + 🚶 10 min

Behind a heavy metal door is the studio of TOKI NASHIKI, the ceramic art collective founded by Wy Lee and Ryan Hui. Inside, an exhibition space precedes the workshop, where antiques, fabrics, vases and furniture accompany pottery work. A mainstay of local and regional exhibitions, the collective constantly pushes its artistic boundaries through studying the Chinese tea ceremony, taking inspiration from *The Classic of Tea* – Lu Yu's tea-lover's bible, from about 760CE – as well as trips to Taiwan and Japan. The resultant works are distinctive, white clay and flower-shaped tea pots, perfect for tea rituals, coffee-making and everyday use.





DOUGUYA HATCHAREA

古道具黒池

📍 No. 01, 6/F, Yuen Fat Industrial Building, 12 Wang Tai Road, Kowloon Bay

🕒 please refer to Instagram for opening hours 📍 hatcharea 📷 hatch_area

🌐 www.hatcharea.com 🗺️ Kowloon Bay Station + 🚶 13 min



To step across the threshold of this Kowloon Bay shop is to step into a parallel world akin to that depicted in Jun'ichirō Tanizaki's *In Praise of Shadows*: 'Everything is delicate and nuanced, softened by shadows and the patina of age.' Here, owner Pete – who spent considerable time living and working in Japan – has meticulously curated a collection that runs from repaired furniture found in traditional Japanese folk houses to ceramics, pottery and woodwork created by Japanese artists. Dim lighting, as elegantly visualised in Tanizaki's essays, invites visitors to re-evaluate their relationship with objects and spaces, at ease and in hushed awe. Come and appreciate the grain of old wood, and the mindfulness of beauty.

Twenty One From Eight 廿一由八

📍 11/F, Pang Kwong Building, 59 Hung To Road, Kwun Tong 🕒 Tue - Sun 12:00 - 18:30
(pantry until 18:00) ☎ (852) 9667 0154 📍 twentyonefromeight 📷 twenty_one_from_eight_hk
🌐 www.twentyonefromeight.com 📍 Kwun Tong Station + 🚶 14 min

Thomas Wong and graphic designer turned woodworker Vera Wong founded Twenty One From Eight in an industrial building, where they make custom furniture from scratch. Enjoy watching American walnut and white oak being turned into heirloom pieces in the open-plan workshop, all with meticulous attention to detail. Occasionally there is a sale of display furniture, and visitors are welcome to take a book from the hanging shelf and relax with a coffee in the adjoining café. The exceptional pastries and desserts are made with love by Vera's sister, Shena Wong, a Le Cordon Bleu-trained chef.





BeCandle

📍 G/F, 102 Man Nin Street, Sai Kung 🕒 11:00 – 19:00 daily 📞 (852) 8481 7684
 📧 becandlehongkong 📷 becandle_saikung 🌐 www.becandle.com.hk (*pre-registration is required for workshops) 📍 Choi Hung Station / Hang Hau Station + 🚗 30 min + 🚶 3 min

Our Land

Winner of the DFA Design for Asia Awards 2023 Gold Award



It's only natural that Sai Kung born and raised Xavier Tsang chose to run his candle shop in the verdant 'back garden of Hong Kong'. BeCandle comprises 140m² of retail and laboratory space (where customers can refill candles) and an upstairs space for workshops (the personalised, multisensory scented-candle-making workshop* is a must-try). Everything is proudly made in Hong Kong with a blend of high-quality vegetal wax, essential oils and fragrances. Tsang's background in furniture design explains his participation in exhibitions and creative collaborations, such as working with a local metalsmith to develop the shop's bespoke scent tester. Highlights include dim sum candles crafted using authentic culinary techniques, candle vessels made using Sai Kung soil, in collaboration with designer Niko Leung, and a set of customisable, meditative kinetic aroma diffusers that work their magic as they spin.

Bunkaya Zakkaten

文化屋雜貨店

- 📍 G/F, Tai Nan Street, Sham Shui Po (other location: Mong Kok) 🕒 12:00 - 20:00 daily
 ☎ (852) 3170 3272 📞 bunkayazakkaten 📷 bunkaya_zakkaten 🌐 www.bunkayaonlineshop.com
 🗺 Sham Shui Po Station / Prince Edward Station + 🚶 7 min / 7 min

Originating from the eponymous retail legend in Harajuku, Tokyo (now sadly closed), Bunkaya Zakkaten is known for its quirky, kitschy and bizarre import goods and fashion accessories. An eye-catching wood-panelled entrance welcomes you back to the 1990s, a time when Japanese culture took Asia by storm. Standing in the shop is like being in the subculture centre of Japan, with folding stools with faces, illustrated bags, off-the-wall accessories and household goods, plus retro wall art and nostalgic plastic dolls. Shop owner Rex Ko runs another must-visit vintage menswear store, Luddite, in Causeway Bay, which also sells singular items of clothing.



文化屋雜貨店
Bunkaya Zakkaten

香港

文化屋雜貨店



Luen Cheong Leather HK

聯昌皮號

📍 173 Tai Nan Street, Sham Shui Po 🕒 10:00 - 19:00 daily 📞 (852) 2393 5926 📧 leatherhk

📷 leatherhk1948 🗺️ Sham Shui Po Station / Prince Edward Station + 🚶 6 min / 7 min



Sham Shui Po was home to many factories that produced leather, fabrics and accessories, and hence was a convenient location for fashion and product designers to source materials for their creations. As one of the few remnants of that industrial era, Luen Cheong has been the epitome of that history and of Hong Kong leather goods since 1948. Now third-generation run, the shop specialises in vegetable-tanned cow hides. The four-storey shophouse's original railings and patterned floor tiles are holdouts from the old days after two renovations. Upstairs, a former staff dormitory is now an exhibition space called Upper Deck Tai Nan, hosting an eccentric mixture of cultural events, while other local handcraft creative units take up residence in the attic and rooftop area.

MIDWAY shop

📍 G/F, 132B Ki Lung Street, Sham Shui Po 🕒 13:00 – 19:00 daily ☎ (852) 3188 1951

📱📷 midway.voyage / midway.shop 🌐 www.midway.voyage

🚇 Sham Shui Po Station / Prince Edward Station + 🚶 3 min / 2 min

Interior designer Pan Tang and graphic designer Rita Chan founded travel platform MIDWAY to celebrate their shared love of life on the road – and soon after a shop to display mementos of their journeys, in addition to their photographs and writings, all of which have amassed a cult following in print and on social media. A store and gallery in one, the pared-back shop evinces a distinct Japanese aesthetic thanks to beautiful objects found by Pan and Rita while travelling, from hand-thrown cups and pots and art-inspired jewellery, to works of century-old heritage brands, with a corner dedicated to artisanal coffee beans. Exhibitions are held in the attic area, adding another dimension to the cultural experience, with ethereal topics such as Japanese Kintsugi art covered.



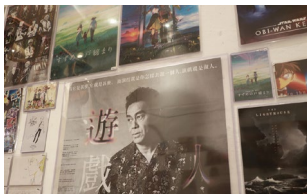


Moviemarks

📍 G/F, 169 Lai Chi Kok Road, Sham Shui Po 🕒 Mon - Fri 19:00 - 21:00

Sat, Sun & public holidays 13:00 - 20:00 📷 moviemarkshk

🌟 Sham Shui Po Station / Prince Edward Station + 🚶 10 min / 8 min



Opening the dark wooden doors of this Japanese-style shop instantly ushers you into a nostalgic world of film posters, pamphlets and catalogues – the passion project of a Hong Kong-Japanese husband-wife partnership. The duo collects unique, direct mailings distributed to promote movies – a long-running practice characteristic of Japan – and sell their visual aesthetics to Hong Kong cinema lovers. Greeted by a line-up of Wong Kar-wai movie posters, visitors are welcome to chat with fellow aficionados on the stepped cushion area, browse the movie catalogues and pamphlets and other movie-themed, illustrative products, or go upstairs to peruse a selection of consignment homeware goods and accessories.

Lumeun Home

📍 Unit A, 8/F, Kwai Bo Industrial Building, 40 Wong Chuk Hang Road, Wong Chuk Hang

🕒 Tue - Fri 11:00 - 18:00, Sat 10:00 - 16:00 (following a specific calendar published on Instagram at the beginning of each month) ☎️ (852) 9440 6062 📱📷 lumeunhome

🌟 Wong Chuk Hang Station + 🚶 1 min

In 2018 Delphine Lernoud left the corporate world and established Lumeun Home, a retail concept that displays beautifully made, thoughtfully sourced furniture while remaining committed to the environment. In this treasure trove of art and design, everything on display is inspired by her twin passions for home decor and travel, as exemplified by the Provence-made, Parisian chic Maison Sarah Lavoine, and the magnificent selection of Chinese furniture pieces. Lumeun also custom-crafts sofas, mirrors, tablecloths and serviettes for clients, all proudly made in Hong Kong as part of their mission to reduce their carbon footprint without compromising quality or style.





Manks

📍 14/F, Cheung Tak Industrial Building, 30 Heung Yip Road, Wong Chuk Hang

🕒 Mon - Sat 10:00 - 19:00, Sun & public holidays 12:00 - 18:00 ☎ (852) 2522 2115

✉ info@manks.com 📱 ManksLtd 📷 manks_hk 🌐 www.manks.com

🚶* Wong Chuk Hang Station + 🚶 1 min



Manks has always been Hong Kong's destination for Scandinavian Modern Design furniture, lighting, antiques and arts since 1996. Occupying the top floor of a 1960s industrial building, the 560m² loft-style showroom is like a mini-museum of Scandinavian mid-century design, with the works of textbook names such as Hans Wegner, Arne Jacobsen and Poul Henningsen waiting for you to take ownership. Tablescape/tablesetting plays a big part in the hygge – or mysa way of living. Manks offers a dazzling range of Aalto vases, Royal Copenhagen and Rörstrand tableware and sculptural Toikka birds.

Sin Sin Atelier

📍 Unit A, 4/F, Kin Teck Industrial Building, 26 Wong Chuk Hang Road 🕒 by appointment

☎ (852) 2521 0308 / 2334 9423 📱 @sinsinatelier 🌐 www.sinsinatelier.com

🚗 Wong Chuk Hang Station + 🚶 4 min

Founded by artist-curator-adventurer Sin Sin Man, this diminutive studio boasts a plethora of artisanal jewellery, silver, clothing and accessories sourced from across Asia, and Indonesia in particular. Her passions for fabric and unique antiquities converge in how materials such as hand-made Mongolian cashmere felt, hand-woven Cambodian silk and Nepalese cashmere wool, as well as hand-dyed Javanese batik, are incorporated into her textile and clothing designs. They're displayed side-by-side with other hand-selected artworks from around the world, plus furniture and tableware handcrafted by Balinese artisans (some of whose works fill Sin Sin's villas in Bali). With a nomadic mastermind at the helm, items and displays change constantly, so be sure to check the place out regularly.





COLOURLIVING

📍 333 Lockhart Road, Wan Chai 🕒 Mon - Sat 10:00 - 20:00, Sun & public holidays 12:00 - 19:00

☎ (852) 2295 6263 📱📷 colourliving.hk 🌐 www.colourliving.com

🚇 Wan Chai Station / Causeway Bay Station + 🚶 8 min / 7 min



If you're craving a taste of luxurious living – from furniture and decorative lighting, to kitchen and bath appliances, to hardware, to the big statement piece for your living room or the hand towel that completes your guest room – you'll find it here, in every finish and texture imaginable. The three-level lifestyle store is a mecca for international designer brands, including some of the most coveted names in the industry: from Europe's finest, such as B&B Italia, Lasvit and De Castelli, to young and spirited marques including MOOOI, GUBI and Menu. The shop's designer crossover and event programme adds a finishing touch to its all-round flair.

Kanamono Hardware Store

金社

📍 G/F, 30B, Wun Sha Street, Tai Hang 🕒 Tue - Sun 13:00 - 18:30

📍 kanamonohardwarestore 📷 kanamonohk 🗺️ Tin Hau Station + 🚶 7 min

A hardware fetishist's paradise in less than 9m², Kanamono offers a fascinating alternative to mass-produced wares. Located on a corner and heralded by a sign-box bearing the Chinese character 'gold' within a boy's face, it is arguably the most stylish shop of its kind in Hong Kong, and is stocked floor-to-ceiling with a dizzying selection of tools, hardware and lifestyle items (camping, anyone?) All are united by practicality and craftsmanship and are hand-selected by owner Sammi Wong, who also works in architecture and interior design. Apart from its eccentric selection from the US, Germany and Japan, the shop also produces its own metalware to meet local needs.





kapok

📍 8 Sun Street, Wan Chai (other locations: Causeway Bay, Tsim Sha Tsui)

🕒 Mon - Sat 11:00 - 20:30, Sun 11:00 - 20:00 ☎ (852) 2549 9254 / 9450 5908 📱 kapokHK

📍 kapok 🌐 www.ka-pok.com 🚇 Admiralty Station / Wan Chai Station + 🚶 12 min / 9 min



To many, kapok is a synonym for cool. Founded in 2006 as Hong Kong's first lifestyle select store, it has grown into an international brand with outposts at prime locations throughout the city. An unmistakable French aesthetic underpins a name suggesting all things beautiful – from on-trend clothing, bags and jewellery, to fragrances, candles and stationery – without compromising functionality. Everything is hand-picked from around the globe, with ‘future classics’ as both its ethos and the name of its own clothing brand. Expect minimalist, niche names – with cult followings that speak to the mood of design-conscious fashionistas – such as Paris-Tokyo lifestyle house Maison Kitsuné and emerging Hong Kong brands Cafuné and Topologie.

THE SHOPHOUSE

📍 4 Second Lane, Tai Hang 🕒 Tue - Sun 11:00 - 19:00 (by appointment)

📍 theshophousehongkong 🌐 www.theshophouse.hk 🚉 Tin Hau Station + 🚶 9 min

In 2020 creative agency UNVEIL LIMITED restored a historic 1930s Grade III 'tong lau', or shophouse, as an unconventional lifestyle and exhibition space. Nestled in a cosy neighbourhood and upholding an ethos of 'unveil the art in everyday life', the five-storey pre-war building hosts an eclectic line-up of exhibitions as it explores the boundaries of art, design and everyday life and celebrates the work of cross-field artists, makers and creative insiders. Step inside the pared-back space that Chinese immigrants once called home and explore how the Shanghai plaster exterior, wrought-iron window grilles, hand-painted tiles and terrazzo flooring fuse with contemporary life and thinking.





Hak Dei

黑地

📍 G/F, 618 Shanghai Street, Mong Kok 🕒 12:00 - 20:00 daily 📞 (852) 9806 1476

📷 waichistreetplayground 🌐 www.hakdei.com 🗺️ Mong Kok Station + 🚶 2 min



Taking cues from traditional ‘mountain shops’ that sell household utensils made of wood, bamboo and clay – materials you might find on a mountain – this independent store collects retro items from Hong Kong, with the likes of locally painted ceramics, bamboo steamers, cast-iron egg waffle moulds and vacuum water bottles on offer. The wooden shelves, glass cabinets and bare concrete walls are an aesthetic match for the old shophouse building’s stone pillars outside. Utility and nostalgic appeal define the selection here, running through their coffee-making and camping items, as well as pieces by their favourite overseas brands: see the vintage Fire-King cups from the US and designer furniture and glassware from Japan.

Novel Fineries

📍 BE4 Basement, The Peninsula Hotel Hong Kong, Salisbury Road, Tsim Sha Tsui
 🕒 Tue - Sun 13:00 - 18:00 ☎ (852) 9718 4765 📱 novel.fineries 🌐 www.novelfineries.com
 🚶 Tsim Sha Tsui Station / East Tsim Sha Tsui Station + 🚶 4 min / 2 min

June Kimberly Lau's fascination with butterflies led her to establish the world's first pocket art accessories label. Since winning a Lane Crawford Design for Asia Award in 2016, she has seen her passion project realise a bespoke destination for gifts in the arcade of one of the world's finest hotels. Each hand-crafted piece on display is designed to rejuvenate heritage art forms, with highlights including double-sided Su embroidery butterfly pocket art and lapel pins; intricate gorgets beaded by Indian artisans; obi-knot bow ties tied by Kyoto obi masters using antique, never worn kimono fabrics and hand-braided Italian leather serpentine belts doubling as necklaces – each one a wearable art piece with a story to tell.



Pocket Art

Winner of the DFA Design for Asia Awards 2016 Bronze Award

11

Architecture

發掘建築新貌

The steel and concrete that shaped the city

Bank of China Tower

中銀大廈

Completed: 1989

📍 1 Garden Road, Central 🗺️ Central Station + 🚶 9 min

Architecture can be a representation of status ... or here, competition, with the Bank of China determined to win. After being dwarfed by Foster + Partners' 179m HSBC headquarters, the bank asked I.M. Pei to design a skyscraper for a challenging, steeply sloping plot – on a modest budget. The 367m building was much cheaper and more rapidly constructed than its neighbour, and its reflective facade and angular sections differentiated it from Central's cluster of towers. Comprising a series of interlocking triangles, the structure took its cue from bamboo, signifying hope and revitalisation in Chinese culture. The ingenious building also required 40% less steel than a conventional equivalent and could resist high-velocity winds – essential in a typhoon-prone city. Architect and critic Peter Blake called it 'the finest modern skyscraper' since Mies van der Rohe's beloved Seagram Building opened in New York in 1958.





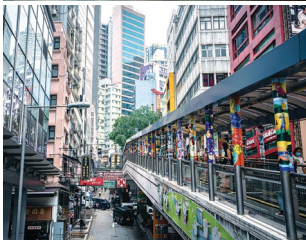
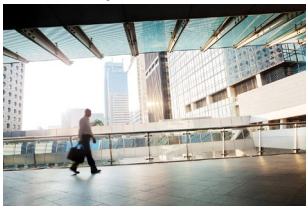
iStock.com/CHUNYIP WONG

Central / Sheung Wan Walkway System

中區行人天橋

📍 Central / Sheung Wan area 🌟 Central Station / Sheung Wan Station

iStock.com/FangXiaNuo



iStock.com/CHUNYIP WONG

A striking aspect of the Hong Kong cityscape is its labyrinth of elevated pedestrian walkways. Connecting and extending high-rise buildings like a giant maze, their scale and scope astound many, to the point that academics have dubbed Hong Kong a 'city without ground'. It all began in the 1970s, when developer Hongkong Land connected a clutch of Central office buildings. The idea took off, expanding from Sheung Wan to Admiralty and being replicated in new town developments such as Sha Tin and Tseung Kwan O. While navigating these webs of bridges, tunnels and lobbies may be disorientating, they alleviate street traffic and pedestrian congestion, and are convenient in shielding people from the elements en route to destinations such as MTR stations, malls and apartments. A miniature model of the system as it exists is on display in the Main Hall Galleries of M+ museum.

Jardine House

怡和大廈

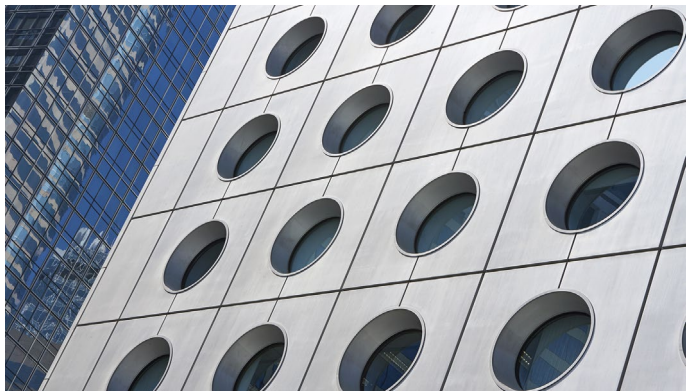
Completed: 1973

📍 1 Connaught Place, Central ☎ (852) 2500 0555

🌐 www.hkland.com/en/properties/china/hong-kong/jardine-house.html

🚶 Central Station + 🚶 4 min

Hong Kong's first skyscraper, once the tallest building in Asia, celebrated its 50th anniversary in 2023. Designed by James Kinoshita of P&T, the building set new standards with its robust design, fastest lifts, largest air-conditioning chillers and 1,748 porthole windows, many offering unobstructed harbour views. The windows' circular design was inspired by Victor Vasarely's Op art movement, as well as the practical need to reduce the tower's weight, because it was constructed on reclaimed land. It was completed with interior elements by Henry Steiner ("the father of Hong Kong design") and an outdoor Henry Moore sculpture, but its artistic value may today find competition from the wildly popular BaseHall food hall in its basement.





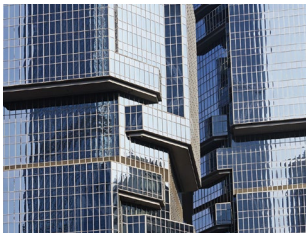
Lippo Centre

力寶中心

Completed: 1988

📍 89 Queenway, Admiralty 📞 (852) 2523 5853 🌐 www.lippocentre.com.hk

🚶 Admiralty Station + 🚶 2 min



This double office tower in Hong Kong's business district was designed by American architect Paul Rudolph and was originally known as the Bond Centre. Its architectural signature is the triple bay windows stacked on its four long facades, each wrapping round to create a visual impression of rotation around the structure and evoking koalas climbing a tree. Supporting the hexagonal floor plates (resulting in lots of corner windows), 12 main columns are visible at the base of the tower and in the lobby and are designed to resemble 'hydraulic pumps that hold the building up'. This landmark building exemplifies the late architect's lifelong pursuit of scale in high-rise buildings, especially from 1980 until his death in 1997, when he frequently worked in Hong Kong, but saw his projects go mostly unbuilt. Its architectural drawings, by structural engineers Wong & Ouyang, are now in an M+ collection.

Union Church

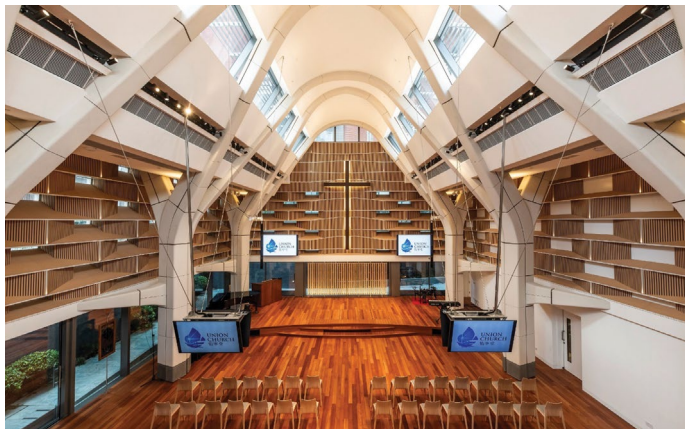
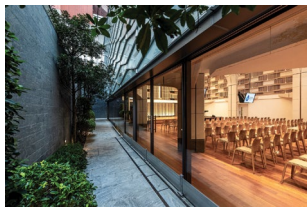
佑寧堂

Completed: 2023

📍 22A Kennedy Road, Mid-levels 📞 (852) 2523 7247 / 9182 7247 🌐 www.unionchurchhk.org

🚗 Admiralty Station + 🚗 4 min

Consisting of a sanctuary building for a 500-person congregation and a five-storey podium incorporating a chapel, kindergarten, fellowship hall and bridal suites, this is a recently completed revamp at one of the oldest religious institutions in Hong Kong. Taking inspiration from the original church, founded in 1844 by Reverend James Legge, local firm KplusK associates designed a 'New Gothic' architecture, whose verticality is emphasised by five pairs of vaulting columns. The columns support lightweight, perforated walls suspended off the ground, creating a light-filled sanctuary space surrounded by a sub-tropical remembrance garden. Elevated by tessellated acoustic panels and light oak seating, the result is a spiritually uplifting building of worship.





Chi Lin Nunnery

志蓮淨苑

Completed: 1998

📍 5 Chi Lin Drive, Diamond Hill 🕒 9:00 - 16:30 daily 📞 (852) 2354 1888

🌐 www.en.chilin.org 🗺️ Diamond Hill Station + 🚶 7 min



One of Hong Kong's most arresting and tranquil escapes, Chi Lin Nunnery was founded in 1934 and completely rebuilt in Tang Dynasty style in 1998. Channelling ancient Chinese construction methods, the impressive all-wood structure features a matrix of interlocking cypress beams and not a single nail, making it one of the world's largest handmade wooden buildings. Amid lotus ponds, bonsai trees and chanting nuns, the buildings are arranged in an axisymmetric layout, epitomising the beauty of symmetry and harmony in traditional Chinese architecture. Cross a footbridge over the calm waters and rocks to the distinctive red Zi Wu Bridge and Golden Pavilion of Absolute Perfection. End the day with a delectable Chinese vegetarian meal at the nearby restaurant, with its exceptional waterfall view.

HKUST Shaw Auditorium

香港科技大學逸夫演藝中心

Completed: 2021

📍 The Hong Kong University of Science and Technology, Clear Water Bay ☎️ (852) 2358 5075

📍 hkustshawauditorium 📷 hkust_sa 🌐 www.shaw-auditorium.hkust.edu.hk

🚗 Choi Hung Station / Hang Hau Station / Po Lam Station + 🚇 34 min / 17 min / 25 min

Winner of the DFA Design for Asia Awards 2022
Bronze Award

Located at the gateway to The Hong Kong University of Science and Technology campus, the auditorium's bold, curved form stands out to signal the artistic and cultural activities within. Designed by Danish practice Henning Larsen, the circular building appears to be wrapped in three white ribbons, interspersed with windows to reveal stunning views of Clear Water Bay. Inside, the elliptical form directs a natural pedestrian flow, and is open and welcoming on all sides without a designated front or back. With its multi-purpose design the venue accommodates a wide range of events – concerts, conferences, film screenings, exhibitions, even theatre and dance – with its deep cantilevers acting as passive shading, an ingenious nod to vernacular architecture and climate.





Photos courtesy of Dr Adrian Lo

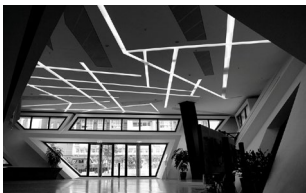
Run Run Shaw Creative Media Centre

邵逸夫創意媒體中心

Completed: 2011

📍 18 Tat Hong Avenue, Beacon Hill, Kowloon Tong ☎ (852) 3442 6894

🚉 Kowloon Tong Station + 🚶 16 min



This bold, irregular, crystal-shaped building houses the School of Creative Media at the City University of Hong Kong. Designed by New York architect Daniel Libeskind, the nine-storey complex contains laboratories, theatres and classrooms, providing an environment for creativity rich in form, light and material. With glazed segments on the exterior, the centre's faceted volume steers upwards to a point – a distinctive feature of Libeskind's work. The crystalline structure is geometrically sophisticated, offering spaces more than 50% modular, and standardised designs to allow impressive flexibility.

The Chinese University of Hong Kong

香港中文大學

Completed: 1970s

☎ (852) 3943 7000 🌐 www.cuhk.edu.hk 📍 University Station

The expansive campus of one of Hong Kong's most prestigious universities is now an architect's playground of styles and periods. Back in the 1960s, architect Szeto Wai adopted a hybrid approach for the campus masterplan, resulting in a large collection of Brutalist structures designed by him and other architects. Notable examples include the Chung Chi Tang Student Centre (1972), with its A-frame structure; the Institute of Chinese Studies, a blend of Brutalism and traditional Chinese planning (1970); and the United College Wu Chung Library (1972), whose concrete water tower crowns a cantilevered horizontal structure. Brutalism emerged from post-war Britain and was prolific internationally in the 1960s and '70s. Though frequently stigmatised for its characteristic bare structures, raw concrete walls and sense of economical utility, the style has enjoyed a revival owing to the dedication of enthusiasts.

Photos courtesy of
The Chinese University of Hong Kong





OPUS HONG KONG

傲璇

Completed: 2012

📍 53 Stubbs Road, The Peak 🌐 www.opushongkong.com

Suggested observation spot: Bowen Road Fitness Trail 🚶 Admiralty Station + 🚶 25 min



For his first residential project in Asia, architect Frank Gehry wanted to design a building to ‘respond to the unique conditions’ of Hong Kong. Thus, anchored against a sublime hillside, this luxurious 12-storey residence draws its inspiration from the breathtaking scenery. Finely tuned glass-enclosed columns form an organic structure, twisting up and around the building like reeds swaying in the breeze. The helical external structure also reduces the need for load-bearing walls, allowing the open-plan apartments’ sinuous facade to be composed almost entirely of glass. The result is a remarkably light and airy interior thanks to the minimal interruptions to the view, meaning an unprecedented panorama of the city below.

Photos courtesy of Dr Adrian Lo

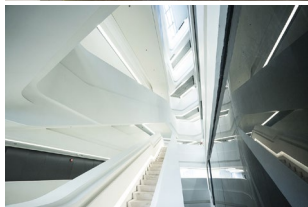
Jockey Club Innovation Tower

賽馬會創新樓

Completed: 2013

📍 Hong Kong Polytechnic University, Hung Hom 📞 (852) 2766 5454 ✉️ sdmktg@polyu.edu.hk
(Pre-registration at least five working days before a planned visit) 🗺️ Hung Hom Station Exit A1

Home to The Hong Kong Polytechnic University School of Design, JCIT was the first permanent work in Hong Kong by Pritzker Prize-winning architect Zaha Hadid. The building's striking form – many liken it to that of a ship – is in stark contrast to that of its surroundings, expressing the dynamism of a forward-looking institution. As the Dame herself said: 'The fluid character of the Innovation Tower is generated through an intrinsic composition of its landscape, floor plates and louvres that dissolves the classic typology of the tower and the podium into an iconic, seamless piece.' The 15,000m² building also addresses the need for a creative and multidisciplinary environment by housing a lecture hall, classrooms, design studios and workshops, plus exhibition spaces and a communal viewing lounge. Visitors are welcome to get up close for a look at the boundless curves and waves indoors and outdoors.



5 Workshops & Experiences

手把手體驗設計



Mudheytong Gallery

物器堂

📍 175 Tai Nan Street, Sham Shui Po 🕒 11:00 - 19:00 daily except Wed ☎ (852) 9863 2210

📱 mudheytong 🌐 www.mudheytong.com

🚶 Sham Shui Po Station / Prince Edward Station + 🚶 7 min / 7 min

Founded by ceramicists Coco Li and Karen Wong, the gallery signifies in its name its multipurpose nature – a combination of ‘mud’, ‘ware’ and ‘space’ (pun in Cantonese intended). Accordingly, the venue is a working ceramics studio, homeware shop and gallery in one. Other than serving as a workspace for aspiring ceramicists, it holds regular pottery workshops for aficionados of all kinds and calibres, with courses on techniques such as wheel-throwing, hand-building and glazing all happening in a relaxed, earth-toned environment framed by a concrete-and-wood shopfront. Pop in for an educational lecture or local or overseas artist’s exhibition to further your appreciation of the art.





LUMP Studio

📍 5B, E Tat Factory Building, 4 Heung Yip Road, Wong Chuk Hang 🕒 Tue - Fri 10:00 - 21:00,
Sat - Sun 11:00 - 19:00 ☎ (852) 2116 0865 📱 @lumpstudio 🌐 www.lumpstudio.com.hk
🚶* Wong Chuk Hang Station + 🚶 1 min



Enjoy the pleasure of making ceramics and pottery at this spacious, light-filled studio tucked away in a southside industrial building. Brimming with inspiring clay creations and adorned with leafy green plants, the space caters to different ceramics-making processes, including hand-building, wheel-throwing, plaster-mould-making, glazing and firing. Beginners can choose from a range of daytime, weeknight and weekend classes, while experienced makers can gain studio access by joining as members. Themed workshops – such as on the Chinese zisha purple clay teapot – and masterclasses chaired by the likes of renowned ceramicist Jun Matsumura, are offered, promoting understanding of the ceramic arts.

EONIQ

📍 G02 & 03 Mill6, The Mills, 45 Pak Tin Par Street, Tsuen Wan 🕒 Mon - Thur 12:00 - 19:00, Fri - Sun & public holidays 12:00 - 21:00 ☎️ (852) 5544 7324 📍 EONIQ 📷 eoniqdesign
 🌐 www.eoniq.co 📍 Tsuen Wan Station / Tsuen Wan West Station + 🚶 12 min / 22 min

The young brand has a lot going on in its Tsuen Wan studio: apart from hand-assembling custom mechanical watches using high-quality Swiss or Japanese movements, EONIQ invites visitors to join workshops and experience the watchmaking craft. Here, you can design your own watch and assemble it from start to finish (or partake in the initial steps, then have it finished by a professional watchmaker to ensure its quality). EONIQ is the proud maker of Hong Kong's first certified mechanical movement, so consider a genuine local timepiece as a memento of your time in the city. But be warned: the waiting list is long!



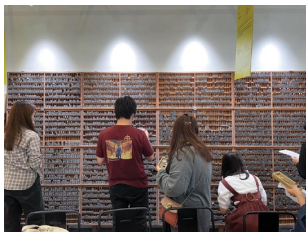
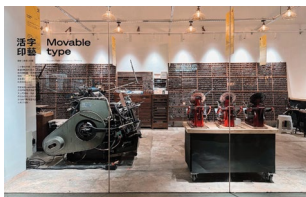


Hong Kong Open Press

香港活字館

📍 G/F, 404 Shanghai Street, Yau Ma Tei 🕒 Fri - Sat 14:00 - 18:00, Sun 12:00 - 18:00

📱 @hkopenpress 🌐 www.hkopenpress.hk 📍 Yau Ma Tei Station + 🚶 2 min



Movable type, consisting of reusable, individual letters, was developed by Bi Sheng (970 to 1051, approximately), of Hubei, China. Much later, letterpress printing would become a thriving industry in Hong Kong, which manufactured and exported movable type. Now all the tools, machinery and more than 170,000 lead type printing blocks are on display in an open-plan studio in Yau Ma Tei. Inspect old metal type stacked neatly in wooden cases, organised according to frequency of use; join workshops to experience the art of typesetting from layout to print – and take the results home; and absorb the story of the Open Press mission to recast ‘Hong Kong Type’.

L'ÉCOLE Asia Pacific, School of Jewelry Arts

L'ÉCOLE 珠寶藝術學院亞太區分校

📍 510A, 5F, K11 MUSEA, Victoria Dockside, 18 Salisbury Road, Tsim Sha Tsui

🕒 Mon - Fri 10:00 - 19:00, Sat, Sun & public holidays 12:00 - 19:00 ☎️ (852) 2653 0030

📱📷 lecoleasiapacific 🌐 www.lecolevancliefarpels.com/hk

🚶 East Tsim Sha Tsui Station + 🚶 4 min

The second permanent location of the world's first jewellery arts school, L'ÉCOLE Asia Pacific, School of Jewelry Arts – supported by High Jewellery Maison Van Cleef & Arpels – is housed in a luminous space designed by Japanese architect Sou Fujimoto. The modern interior plays with organic shapes and natural light against an unparalleled harbour view, providing an exciting backdrop for year-round courses, talks and free exhibitions. Start your glittering journey by perusing museum-calibre jewellery and precious stones upfront in the exhibitions, then enrol in one of the 20-plus courses – Savoir-Faire, Art History of Jewelry or the World of Gemstones – all led by experts in their fields and designed for adults and children respectively, with no prerequisite other than a curious mind.



8 Accommodation

型格住宿之旅

Where to sleep in style

SLEEPP

眠舍

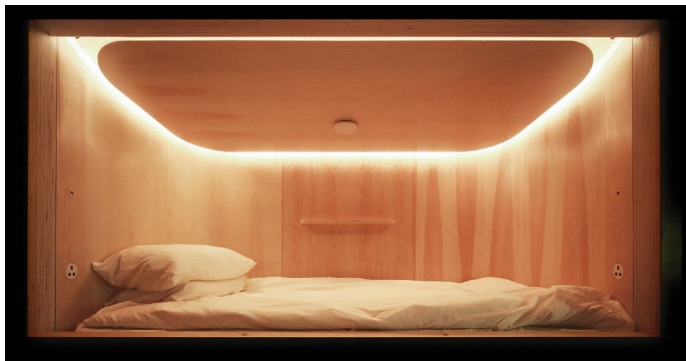
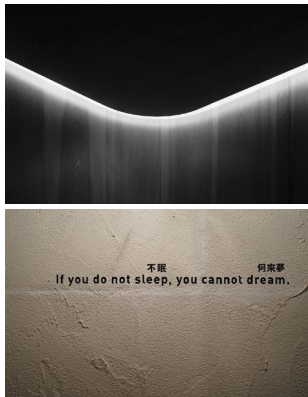
📍 1/F, 242 Queen's Road Central, Sheung Wan (other locations: Central, Causeway Bay)

☎ (852) 9604 6049 🌐 sleeeep.io 📷 [sleeeep.exp](https://www.instagram.com/sleeeep.exp) 🌐 www.sleeeep.io

🚗 Sheung Wan Station + 🚶 5 min

Hong Kong-born Alex Kot and Joe Jun Liao both suffered from sleep disorders. Believing a good night's sleep was essential for 'everyone, everyday, everywhere', the childhood friends created SLEEPP, the first capsule hotel in one of the busiest cities in the world. The minimalist and futuristic, pine wood-lined space is all about blissful unconsciousness, thanks to patented Red Dot Award-winning SLPer® one-person sleep capsules, featuring a choice of bespoke mattresses and pillows, with airflow, light and sound engineered to respond to individual needs. Offering flexible booking (45 minutes up) and keyless access, SLEEPP's outposts are all centrally located, so urban dwellers can easily crash for a few hours' recharge. The sleep mission has even taken flight to Fujinomiya, Japan – where capsule hotels first appeared, in the 1970s.

Winner of the DFA Design for Asia Awards 2017
Silver Award



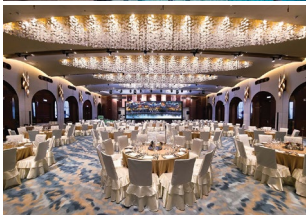


WM Hotel Hong Kong, Vignette Collection

洲至奢選香港WM酒店

📍 28 Wai Man Road, Sai Kung 📞 (852) 2196 6888 📱 @wmhotelhk 🌐 www.wmhotel.hk

🚗 Choi Hung Station / Hang Hau Station + 🕒 30 min + 🚶 5 min



A location on the shoreline of Sai Kung, the ‘back garden of Hong Kong’, enables this modern hotel to offer expansive seascapes and greenery, a comprehensive choice of water sports and a town centre a stroll away. With an interior by Alexander Wong Architects and brand identity by Toby Ng Design, every detail boosts a sense of serenity, maximising the natural environment to offer a true ‘urban escape’. As well as an L-shaped infinity rooftop pool there’s an all-white chapel for weddings and Instagram updates, and other amenities such as gym and sauna. The comfort of the rooms is unparalleled: more than 70% come with private balconies offering immense sea views, while some have access to a private rooftop garden, where you can erect a fully equipped tent to enjoy ‘glamping by the sea’.

YHA Mei Ho House Youth Hostel

YHA 美荷樓青年旅舍

📍 Block 41, Shek Kip Mei Estate, 70 Berwick Street, Sham Shui Po

☎ (852) 3728 3500 / 2788 1638 📞 hongkongyha 📷 yha_hk 🗣️ 香港青旅YHA

📖 小红书 HKYHA青年旅舍 🌐 www.yha.org.hk/mhh

🚇 Sham Shui Po Station / Shek Kip Mei Station + 🚶 8 min / 10 min

Winner of the DFA Design for Asia Awards 2015
Merit - Revitalization Scheme - By AD+RG
Architecture Design and Research Group Ltd.

This H-shaped hostel building was originally part of the Shek Kip Mei Estate, built in the wake of a widespread fire that left almost 58,000 people homeless in 1953 and marked the start of Hong Kong's public housing policies. Now revitalised, Mei Ho House offers 129 rooms with nostalgic themes, a pet-friendly café and a heritage museum documenting public housing and living conditions in Hong Kong from the 1950s to the '70s. The recipient of an honourable mention in the 2015 UNESCO Asia-Pacific Heritage Awards for Cultural Heritage Conservation, the popular youth hostel is also a gateway to the district's unique culture.





Apartment O

陳公館

- 📍 5 Hoi Ping Road, Causeway Bay (other location: Happy Valley) ☎ (852) 9858 0812
- 📍 hkapartmento 📷 apartmento_hk 🌐 www.apartmento.hk (minimum stay is one month)
- 🚶 Causeway Bay Station + 🚶 15 min



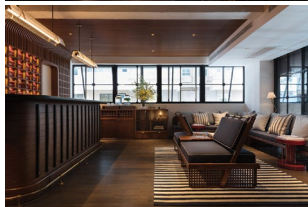
If you want to sleep in the elegance and charm of old Hong Kong and classic Shanghai, look no further than Apartment O. The luxury serviced apartment brand's Causeway Bay flagship has long charmed pedestrians with its meticulously restored 1920s building. Inside, you're transported to a bygone, golden era where time stands still. Surrounded by traditional art pieces and chic antique furniture, guests enjoy spacious rooms (95–139m²), fully equipped kitchenettes and luxury amenities and fixtures (Jacuzzis!) The brand also has a Happy Valley outpost, where all 22 rooms offer uninterrupted racecourse views. Pet-friendly, fully serviced, premium locations – these period apartments surely earn a prominent place in modern Hong Kong.

The Fleming

香港芬名酒店

📍 41 Fleming Road, Wan Chai ☎ (852) 3607 2288 📱 thefleminghk 🌐 www.thefleming.com
 🚇 Wan Chai Station + 🚶 4 min

Design studio A Work of Substance was charged with redesigning and rebranding The Fleming – and the result is a 66-room boutique hotel that is a true reflection of Hong Kong. Given the 1970s building's near-harbourfront location, the renowned cross-harbour ferry was taken as the foundation for every detail (extending to the use of carmine reds and bottle greens, as seen on the ferries' hulls), the custom-designed furniture and lighting, and the wall of vintage Hong Kong mailboxes in the lobby. With a design language evoking the city's memory and identity, The Fleming is a multi-sensory cultural experience that leaves guests feeling nostalgic.

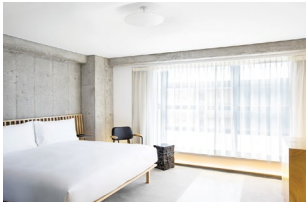




TUVE

📍 16 Tsing Fung Street, Tin Hau 📞 (852) 3995 8899 🌐 tuve.hk 📷 tuvehotel 🌐 www.tuve.hk
 🚶 Tin Hau Station + 🚶 3 min

Winner of the DFA Design for Asia Awards 2016
 Grand Award with Special Mention & Gold Award



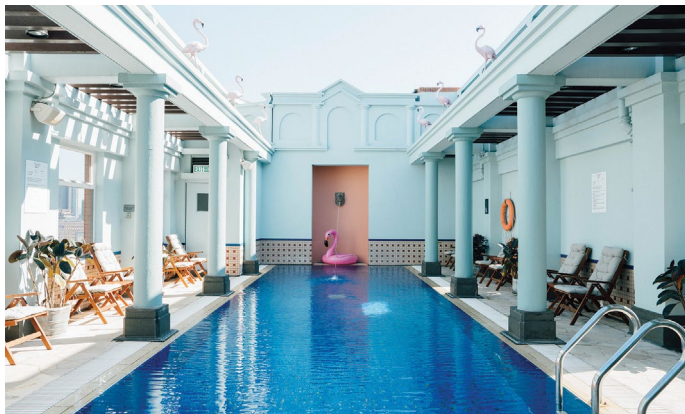
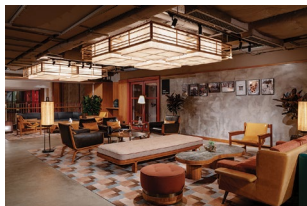
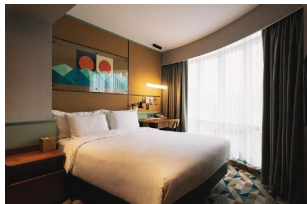
A stylish sanctuary rooted in one of Hong Kong's best foodie neighbourhoods, TUVE is hailed by *The Telegraph* as one of the coolest small hotels in the city. Inspired by an ethereal photo series of Sweden's Lake Tuve by Kim Højtermand, the 66-room boutique property is a study in minimalism as interpreted by Hong Kong studio Design Systems. The understated entrance, interplay of light and shadow and layering of raw concrete, oxidised metal, veined marble and timber panels add sophistication to a meticulously curated, austere vibe and pared-back aesthetics. Rooms are compact but well-equipped: fold open a big 'magic' wooden box in a corner to find in it a chair, tiny desk and well-stocked pantry.

Eaton Hong Kong Hotel

香港逸東酒店

📍 380 Nathan Road, Jordan 📞 (852) 2782 1818 🌐 [eatonhkhotel](#) 📷 [eaton.hk](#)
 🌐 [www.eatonworkshop.com](#) 🗺️ Jordan Station / Yau Ma Tei Station + 🚶 4 min / 7 min

'Don't call it a hotel. Eaton HK is part of a new counterculture movement intersecting social impact ...' It's an uncommon self-description for a hotel, but Eaton HK is committed to living up to its word. Drawing inspiration from Wong Kar-wai's 1990s Hong Kong films, the 1970s building was overhauled by New York studio AvroKO, with brilliant use of tiles, millwork and metalwork as a cultural nod to old Hong Kong. Located in the vibrant neighbourhood of Jordan, Eaton HK is a dynamic and inclusive cultural hub that boasts robust arts and music programmes, workshops, exhibitions, performances and screenings on topics such as queer culture and Bollywood. It also features a cinema-auditorium, radio station, members' workspace, music venue, cocktail bar and terrace, buffet restaurant, food hall, art gallery, event space, a Michelin-starred Chinese restaurant, curated retail shop and rooftop pool.

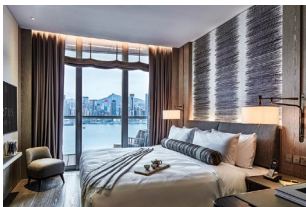




K11 ARTUS

寓館

Victoria Dockside, 18 Salisbury Road, Tsim Sha Tsui 📞 (852) 2107 3388 📱 k11artus
 🌐 www.artus.com.hk 📍 Tsim Sha Tsui Station / East Tsim Sha Tsui Station + 🚶 12 min / 2 min



Touted as an ‘artisanal home for tomorrow’s creatives to live a salon lifestyle’, this serviced residence is one of the signature offerings at Victoria Dockside, the new art and design district on the reimagined Tsim Sha Tsui waterfront. Founder and philanthropist Adrian Cheng envisaged a welcoming space for keen minds to find inspiration, with luxurious interiors by André Fu and exquisite arts and crafts scattered throughout. The residences’ wavy glass balconies are perfect for taking photos while you soak up the panoramic harbour view, and their fully equipped kitchenettes are handy for brushing up your cooking skills. For an extra incentive to visit, the property donates part of its revenue to the K11 Craft & Guild Foundation for conserving and rejuvenating fast-disappearing Chinese craftsmanship.

11 Food & Beverage

品味創新飲食思潮





Ah Jeng's Coffee Club

咖啡呀唔該

📍 Shop B, Ground Floor, Tung Cheung Building, 1 Second Street, Sai Ying Pun

🕒 Mon - Fri 8:00 - 18:00, Sat - Sun 9:00 - 18:00 📱 @ahjengcoffeeclub

🚶 Sai Ying Pun Station + 🚶 2 min



Before pursuing her comedy career, 903 Radio DJ Ah Jeng (Wong Ching-yi) was a barista, and coffee still flows in her veins: after running an online boutique coffee shop for three years, she opened a bricks-and-mortar café in laid-back Sai Ying Pun. Bursting with visual zest, the bright orange-themed space is the work of local design studio Hintegro (whose shop, HINT., is next door) and features a wall adorned with caricatures by local illustrator Curly Sai. The house blend uses sun-dried and washed Ethiopian and Honduran coffee beans, providing a citrus-like acidity and white flower notes. Signature drink The Salty and Wet (a blend of salted kumquat and iced coffee) and home-baked desserts, such as Japanese cream rolls and scones, are also must-tries.

Duddell's 都爹利會館

📍 Level 3, 1 Duddell Street, Central 🕒 Mon - Sat 12:00 - 15:00; 18:00 - 23:00,
Sun 12:00 - 15:00; 18:00 - 22:00 📞 (852) 2525 9191 📱 duddellshk 🌐 www.duddells.co
🚇 Central Station + 🚶 4 min

This Michelin-starred restaurant serves traditional Cantonese cuisine at its finest; but what could be better than to accompany excellent food with a side dish of art and design? The beautiful two-level space (designed by the one and only Ilse Crawford) features a main dining room and salon, connected by a striking inner staircase. The possibilities here are as rich and flavour-packed as the food: enjoy the agony of deciding whether to survey the financial district, cocktail in hand, from the verdant terrace, enjoy an art show or screening, tuck into an unlimited dim sum brunch, or dine like a seasoned collector against a wall full of coveted art pieces.





Halfway Coffee

半路咖啡

📍 26 Upper Lascar Row, Sheung Wan (other locations: Mid-Levels, Sheung Wan, Mong Kok, Ho Man Tin) 🕒 08:00 - 18:00 daily 📞 (852) 2606 1160 📍 Halfwaycoffee 半路咖啡
 📱 halfwaycoffee / halfwaymuseum 🗺️ Sheung Wan Station + 🚶 6 min



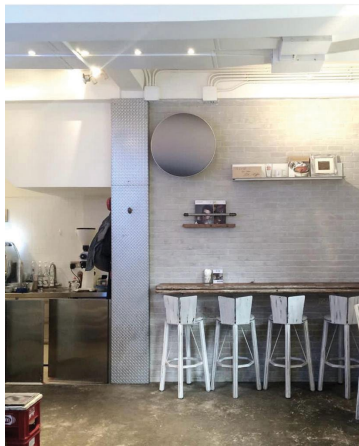
Aside from all the classic coffee options, the wide selection of teas and the decent food menu, Halfway is best known for serving its brews in vintage China cups – even the takeaway paper cups feature porcelain patterns so the aesthetic won't be compromised. Owner/barista Tommy Chui is so committed to the cups that there's a Halfway Museum next door dedicated to his collection. This relaxing coffee joint is appropriately tucked away near the antiques shopping area known as Cat Street, the source (along with Sham Shui Po) of all those delicate receptacles. Chui wanted his cafés to be part of the local fabric, with locations and interiors customised to establish a community identity. The result is a wealth of 1980s-inspired detail, extending to cashiers using metal buckets to collect money, as in traditional local markets.

LOF10

辦館

📍 1 U Lam Terrace, Sheung Wan 🕒 10:00 - 19:00 daily ☎ (852) 2540 2210 📱 Lof10hk
 📷 lof10hk_official 🌐 lof10hk.wixsite.com/lof10hk 📍 Sheung Wan Station + 🚶 10 min

Opened in Sheung Wan in 2013 as an art gallery and café, LOF10 soon became a popular ‘secret spot’ for those who enjoy a laid-back artsy environment along with great coffee. The name is derived from the words ‘love often’, while the Chinese name literally refers to its original incarnation as a traditional grocery store selling imported goods – a fast-disappearing archetype of which the traditional shop shutter is a reminder. Bare concrete floors, grey brick walls, metal stools define the space, while floor-to-ceiling glazing opens it up to its historical, chic neighbourhood.





Magistracy Dining Room and Botanical Garden

📍 G/F, Central Magistracy, Tai Kwun, 1 Arbutnot Road, Central 🕒 Lunch: Thur - Sun 12:00 - 14:30, Dinner: 17:30 - 00:00 daily 📞 (852) 2252 3177 📱 themagistracyhongkong
 🌐 www.themagistracyhongkong.com 📍 Central Station + 🚶 9 min

Feasting in the Magistracy Dining Room is an awe-inspiring experience. Images of the Joyce Wang-designed interior went viral when the restaurant opened and it was easy to see why. Recalling a heritage London establishment, the high vaulted ceilings, carved timber panels, oxblood leather seating and golden accent lamps all ignited memories of the building's historical significance. Housed in the former Central Magistracy, once Hong Kong's Supreme Court, this monument has taken on a new lease of life as a world-class hospitality venue. The Dining Room – overseen by Michelin-starred executive chef Matthew Kirkley – provides the perfect backdrop for power lunches and special-occasion dinners; and one simply cannot refuse the temptation of enjoying the city's finest gin and tonics alfresco in the lush Botanical Garden.



Plantation Tea Bar

半坡茶莊

📍 18 Po Tuck Street, Shek Tong Tsui, Sai Wan 🕒 Wed - Sun 12:00 - 00:00 📍 PlantationHK
 📍 plantation_HK 🌐 www.plantation.hk 📍 Hong Kong University Station + 🚶 4 min

Nana Chan is widely known for creating several of Hong Kong's most beloved tea cafés – and her latest venture may be the most ambitious. Plantation, a relaxing tea haven, features a beautiful 10-seat stone counter, where guests can savour liquid sensations from a seasonal tea-tasting menu guided by tea masters, brewed using different techniques and paired with delicate snacks, all designed to reveal the varied personalities of a tea type. At night the space turns into a bar where tea cocktails, created by award-winning mixologist Antonio Lai, are served. All Plantation's teas, sold by the pot or in retail packs, come from small family farms around Asia where teas are still almost entirely handmade and infused with generations of wisdom.





Artistry Brewing Company (A. B. C.)

藝釀

📍 G/F, Block D, Tung Fat Building, 43A Kam Ping Street, North Point 🕒 12:00 - 22:00 daily (special brunch menu on Sundays) ☎️ (852) 3619 7013 📱📷 artistrybrewingcompany
 🌐 www.artistrybrewingcompany.com 🗺️ North Point Station + 🚶 3 min



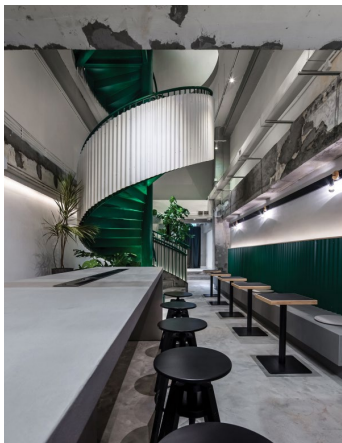
Tucked in a back alley in North Point, one of the oldest neighbourhoods in Hong Kong, A.B.C. is a 'home kitchen where every dish is made as if for friends', says Johnny Wong, its founder and head of local design studio FAK3. Transforming seamlessly from café to restaurant to bar in the course of the day, A.B.C. serves artisanal coffee, casual meals, locally brewed beers and cocktails in a distinctly creative lifestyle environment. Inside, a mélange of handcrafted furniture pieces – made by local design studio R341 from materials salvaged from demolished houses – defines the space, elevated by neutral tones and metallic accents. Guests can also enjoy the hidden courtyard seating area in front, where abundant greenery shelters the café from the hustle and bustle beyond.

Gitone 梓桐堂

📍 Shop GB27-28, Lei King Wan, 45-47 Tai Hong Street, SohoEast 🕒 Tue - Sun 12:00 - 15:00;
18:00 - 22:00 📞 (852) 2527 3448 📞 (852) 9025 1988 🌐 GitoneIntl 📷 gitone.hk
🌐 www.gitone.hk 📍 Sai Wan Ho Station + 🚶 8 min

Dating back to 1995, Gitone is a triple-faceted establishment: an art and ceramics gallery showing works from its own collection; a workshop providing comprehensive painting and ceramics training for adults and children; and a Chinese private kitchen specialising in traditional recipes. It offers an authentic 'art dining experience', with tables scattered around the spacious gallery against walls and shelves of artworks, with handmade utensils from the ceramics workshop used to serve you an elegant meal. For the full experience (and for an extra fee), diners may sign up for a pre-dinner ceramics and painting workshop.





Colour Brown X GO.ON Space

📍 G/F - 1/F, 13 Wong Chuk Street, Sham Shui Po 🕒 10:00 - 19:00 daily 📞 (852) 2791 7128

📍 📷 colourbrowncoffee 📍 Sham Shui Po Station / Prince Edward Station + 🚶 7 min / 7 min



A bold, deep green and brass gate welcomes you to this three-storey enterprise, starting at ground level with the sustainable coffee shop Colour Brown. Here, an East-West menu offers such comforts as instant noodles and all-day breakfast, as well as a modern take on yuenyeung that uses Italian espresso to give a potent twist to the local favourite coffee-tea beverage. An Instagram-standout spiral staircase leads to GO.ON, a multipurpose area where regular exhibitions, workshops and events on culture, coffee, eco-themes and music, as well as art and design, make this a staple for the local creative crowd.

Whatever. Coffee

📍 172B Tai Nan Street, Sham Shui Po 🕒 Tue - Sun 11:00 - 21:00 ☎ (852) 5437 0493

📱📷 whatevercoffee.co 🌟 Sham Shui Po Station / Prince Edward Station + 🚶 8 min / 6 min

What's better than sweetening your usual caffeine fix with a bit of culture? This multipurpose café brings together elements of old and new in a pulsing neighbourhood, along with exciting exhibitions ready to inspire and amuse. The historical architecture serves as a perfect backdrop to fresh ideas; from vinyl and illustrations to cult movie posters, there are no off-limits topics for this little coffee spot. Refreshing speciality drinks such as Citrus Lemon Cold Brew and Espresso Tonic invigorate body and mind, especially during Hong Kong's hot summer days.





Tamora

📍 46B Tai Mei Tuk Tsuen, Tai Mei Tuk, Tai Po 🕒 11:00 - 19:00 daily 📷 tamora_tmt_official

🚗 Tai Po Market Station + 🚗 18 min



In the Jeju dialect of South Korea, ‘ta’ means island and ‘mora’ means gathering; and this three-storey waterside café has become an online/offline sensation for picturesque rendezvous, thanks to a café atmosphere reminiscent of Jeju Island’s. Its minimalist interior is the work of Hong Kong- and Paris-based Korean company PLKA Studio, which used elements such as an arched wall and extensive glazing to bring the café’s verdant surroundings close. Though predominantly concrete, the decor is elevated by eccentric brick, wood, leather and metallic details. Order Jeju’s signature matcha latte and ade and enjoy some time surrounded by nature ... with an irresistible croissant-waffle ‘croffle’.

4 Nightlife

夜遊創意





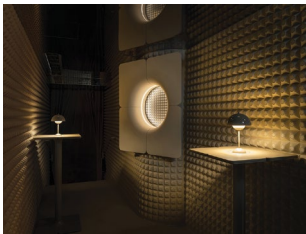
Artifact Bar

📍 No. 1&2, Shop 5&7, LG/F, Jardine House, 1 Connaught Place, Central

🕒 Wed - Thur 17:00 - 01:00, Fri - Sat 17:00 - 02:00 📞 (852) 6468 8762 📧 artifact_bar

🌐 www.artifactbar.com 📍 Central Station + 🚶 5 min

This otherworldly experience is a recent creation of NCDA's Nelson Chow, the design force behind speakeasies Foxglove, Please Don't Tell and Dr Fern's Gin Parlour. Visitors enter via a secret passage inside BaseHall 2 and proceed through an acoustic chamber, which dampens noise from the bustling food hall. A surreal yet serene realm awaits at the main bar, with guests greeted by repetitive rib-like structures reminiscent of underground cisterns. The mirrored ceiling creates an illusion of soaring height, leading the eye to a far-end bar whose skylight bathes it in the soft glow of the setting sun. Envisaged by industry veterans Ezra Star, Michael Larkin and Beckaly Franks, the whole futuristic, sci-fi experience is completed by a cocktail and aged spirit-focused drinks programme overseen by bar manager J Frank, with pairing bar snacks provided by ARTIFACT KAYA, the izakaya counter outside.



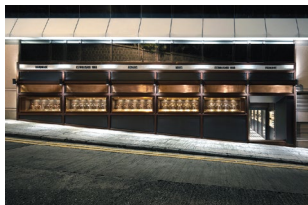
Foxglove

📍 2/F, Printing House, 6 Duddell Street / 18 Ice House Street, Central

🕒 Lunch: Mon - Fri 12:00 - 15:00; Dinner & Dance: Mon - Tue 17:00 - 23:00, Wed 17:00 - 00:00, Thur 17:00 - 01:00, Fri 17:00 - 02:00, Sat 18:00 - 02:00 (Last dining order is at 21:00 on Mon & Tue, 21:30 on Wed & Thur, 22:00 on Fri & Sat) 📞 (852) 2116 8949 📷 foxglove.hk

🚶 Central Station + 🚶 6 min

A secret bar reserved for gentlemen and ladies alike, Foxglove can be reached via a gents' umbrella shop only. Press the silver handle of an umbrella on the wall and a door slides open to reveal a setting from a bygone era. Nelson Chow of NCD A took cues from traditional British private clubs to craft the cinematic interior, with the main lounge featuring a marble-lined cocktail bar and deep blue leather seating, accented by a sculptural cream lacquered ceiling that wraps around the entire space. With live music from Wednesday to Saturday and a VIP room straight off the Orient Express, it all adds up to an adventure in different times and places. And, those handmade, hand-stitched wooden umbrellas you saw at the front are for sale!





Ho Lan Jeng

何蘭正

📍 2/F, LKF29, 29 Wyndham Street, Central 🕒 Sun - Thur 12:00 - 23:00, Fri - Sat 12:00 - 02:00
 ☎ (852) 2342 2224 📱 holanjeng 🗺 Central Station + 🚶 4 min



With a common Cantonese phrase loosely meaning ‘so f***ing good’ as its name, expect nothing but nods to local culture here. Promoting the craft beer scene is the mission, as indicated by huge illuminated signs reading ‘Gwai Lou herbal tea’ (meaning ‘beer’ in the cunning Canto tongue) and a menu full of niche local brews such as Citibrew, Moonzen and more. Equally Hong Kong-inspired are cocktails such as VLT (vodka and lemon tea) and Sesame Mochi (sesame whisky with peanut foam), as are items from the celebrated food menu – think Cantonese classics with a contemporary twist, such as slow-cooked Iberico char-siu and crème brûlée in Chinese fermented bean curd.

Ping Pong 129 Gintonería

乒乒城

📍 L/G Nam Cheong House, 129 Second Street, Sai Ying Pun 🕒 Tue - Fri 17:00 - 00:00, Sat & Sun 17:00 - 01:00 ☎️ (852) 9158 1584 📱 pingpong129 🌐 www.pingpong129.com

🚗 Sai Ying Pun Station + 🚶 3 min

Hidden behind an anonymous red door is one of the city's best-kept secrets. It's understandable that art and fashion types are drawn to the 'gintoneria' created by owners Hugh Zimmern and Juan Martínez Gregorio, who ingeniously turned an old ping-pong hall into a stylish Spanish gin bar. Among the bare concrete pillars, the aluminium window grilles so common in the city have been retained and are playfully referred to in an installation by local artist Nadim Abbas. There's also graffiti calligraphy by the King of Kowloon and a sign reading 'Keep your body fit'. Enjoy the wide selection of gins and tonics, from Spanish brand Gin Xoriguer to locally owned Perfume Trees and soak up the cool atmosphere and roominess of the space.



4 Urban Escapes

呼吸鬧市中的綠意

Oases between skyscrapers



Quarryside

舍區

📍 20 Hoi Shin Lane, Quarry Bay ☎ 09:00 - 21:00 daily 📱 @quarryside.hk
 🌐 www.quarryside.hk 🗺 Quarry Bay Station + 🚶 9 min

Where once was a vacant plot of government land is now Quarryside, a multipurpose venue for community, artistic and cultural activities. Spanning more than 3,700m² and featuring open lawn as well as its Dockyard Theatre, Workshop Space, Community Kitchen and Function Rooms, Quarryside hosts events including swing dancing, theatre performances and coffee-tasting, as well as serving as a pet-friendly leisure zone. Its architecture is inspired by the neighbourhood's industrial past, with the rear of the pavilion resembling the tiled roof of the sugar refinery nearby, and a flattened roof at the centre paying homage to the pier.





Yi Pei Square Playground

二陂坊遊樂場

📍 20 Yi Pei Square, Tsuen Wan [f](#) [i](#) [@designtrust](#) [@www.designtrust.hk/DTFS](#)

🚗 Tsuen Wan Station + 🚶 9 min

Winner of the DFA Design for Asia Awards 2021
Grand Award



This 930m² micro-park has been overhauled as a ‘communal living room’ thanks to a pleasingly elementary palette of pool blue, marigold and maize terrazzo and friendly play and fitness equipment. Built in 1988, the linear site is surrounded by subdivided flats in old buildings where the community bonds are strong. Under the Design Trust Futures Studio’s ‘Play is for the People’ programme, conceptualised and curated by Marisa Yiu (Co-Founder, Lead Curator-Executive Director of Design Trust), with the collaboration of mentor architect Mimi Hoang and mentee designers Kay Chan, Stephen Ip, Jonathan Mak and Christopher Choi, several separate areas were connected in one large public space by a colourful groundscape, creating a safe and playful environment for community members to step out of their homes and enjoy their urban park.

Photos courtesy of The Design Trust

Viva Blue House - Hong Kong House of Stories

嘩藍屋 - 香港故事館

📍 G/F, 72A Stone Nullah Lane, Wan Chai 🕒 10:00 - 18:00 (closed on Weds and designated public holidays) ☎ (852) 2833 4608 📱 SJSBOS / vivabluehouse 📷 vbh.hkhos / vivabluehouse 🌐 www.vivabluehouse.hk 🗺 Wan Chai Station + 🚶 7 min

In a busy neighbourhood of old buildings and sleek bars, this head-turning flash of cobalt is a four-storey shophouse built in the 1920s in typical Lingnan style. Before WWII, the Grade I historic structure and its associated outbuildings were successively home to the area's only English school, a martial arts temple and an osteopathy clinic, along with working-class tenant families. The cluster acquired its stunning blue appearance during a renovation in the 1990s and received an Award of Excellence from UNESCO for cultural heritage conservation. Today, what is known as Viva Blue House retains a vibrant community, with the Hong Kong House of Stories mini-museum within serving as a connecting point, outlining the complex's history and significance, and offering workshops and guided tours to interest all ages.





iStock.com/winhorse

Salisbury Garden

梳士巴利花園

📍 Salisbury Road, Tsim Sha Tsui 🚇 East Tsim Sha Tsui Station + 🚶 6 min

*Winner of the DFA Design for Asia Awards 2019
Bronze Award*

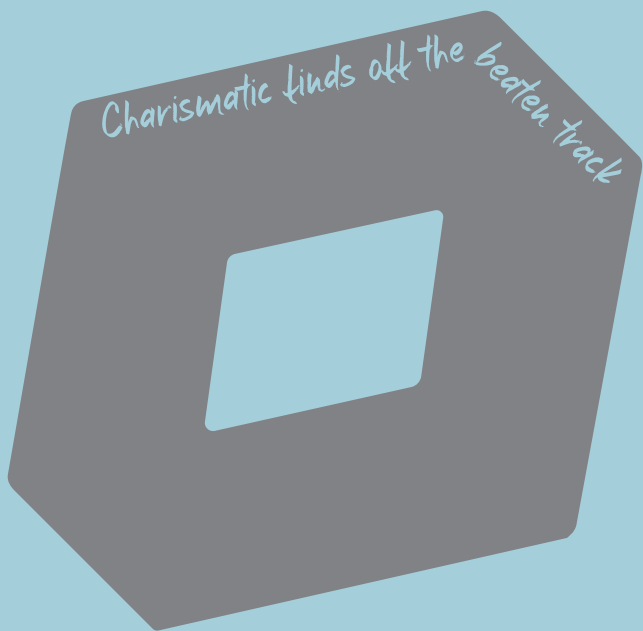


iStock.com/georgeclerkc

Standing in a prime art and culture district, close to the Hong Kong Museum of Art, Hong Kong Space Museum, K11 MUSEA and the Avenue of Stars, this previously enclosed garden has been transformed by New York High Line designer James Corner. His aim was to open the garden to the Tsim Sha Tsui harbourfront, using careful landscaping, a mini-amphitheatre and oval lawn to make it a place for events and arts. Even the utilitarian infrastructure and facilities are sources of aesthetic joy – ventilation exhausts and emergency exits are disguised as white, wavy green walls, while the public lavatories by LAAB Architects resemble a lantern glowing in the dark.

4 Hidden Gems

尋訪隱世創意





Choi Hung Estate

彩虹邨

📍 5-19 Tse Wai Avenue, Ngau Chi Wan 🚉 Choi Hung Station + 🚶 2 min



Public housing estates in the city were once deemed monotonous and unimaginative, but thanks to social media many unique examples of public housing estates have been rediscovered and turned into Insta-worthy destinations. The multi-hued Choi Hung Estate, built in 1964, is the pick of the hyped bunch. The utilitarian design, with pastel rainbow exterior, has won it architectural accolades and served as the backdrop to award-winning photographs. It's no secret that the rooftop basketball court is the best shooting location, but while plotting the best shot try not to disturb the community in doing what they love – enjoying a leisurely walk or a competitive match.

Yuet Tung China Works

粵東磁廠

📍 Unit 1-3, 3/F, Kowloon Bay Industrial Centre, 15 Wang Hoi Road, Kowloon Bay

🕒 Mon - Sat 9:00 - 17:00 ☎️ (852) 2796 1127 🌐 yuettungchinaworks

📱 yuettungchinaworks_official 🗺️ Kowloon Bay Station + 🚶 10 min

Trading since 1928, Yuet Tung once employed 300 painters and was Hong Kong's largest manufacturer of hand-decorated porcelain. Today it stands as the city's last factory of its kind. Specialising in *guang cai* – a Cantonese style of painted porcelain dating back to the Qing Dynasty – it is now managed by third-generation Joseph Tso, who is taking its precious art into the future via media interviews, bespoke orders from restaurants and collaborations with museums and lifestyle company Lane Crawford. At the factory, a handful of master craftsmen continue painstakingly to hand paint intricate patterns on white porcelain, adding adornments to plates, saucers, bowls and jars of every shape and size. It's a trove worthy of a treasure hunt.





Yim Tin Tsai

鹽田梓

📍 Yim Tin Tsai, Sai Kung 🕒 Heritage Exhibition Centre: Tue - Sun 10:00 - 17:00
 ☎ (852) 2791 6226 🌐 www.yimtint sai.com 🚏 Sai Kung Public Pier (15 min)



Once abandoned, this Hakka-Catholic island is now a thriving destination for creativity. Visitors are greeted by an imposing wooden sculpture and a colourful birdhouse, before they make their way to the UNESCO-recognised salt pans and St Joseph's Chapel, both remnants of a 200-strong fishing and salt-producing community. Grab some local snacks, such as Hakka dough dumplings and tofu custard, at the village store, visit the heritage exhibition and preservation centre, or join a guided tour for a detailed look into the lives of the islanders. Those visiting during the annual Sai Kung Hoi Arts Festival (Nov-Jan) can also examine artworks co-created by artists and villagers, more examples of which can be found on other Sai Kung islands.



Photos courtesy of One Bite Design Studio

Vinyl Hero

📍 Flat D, 5/F, Wai Hong Building, 239 Cheung Sha Wan Road, Sham Shui Po

🕒 15:00 - 20:00 daily 📞 (852) 9841 7136 📧 vinylhero_paul 📍 Sham Shui Po Station + 🚶 1 min

Tucked away in a residential building on the busy Cheung Sha Wan Road, Vinyl Hero is a secret lair for vinyl lovers. Past a door covered with stickers, graffiti and concert posters making it look like the practice room of a young band, owner Paul Au – ‘The Foster Father of Vinyl!’ – has amassed a collection of more than 300,000 records from the 1960s to the ’80s, spanning all genres. Boxes of discs at surprisingly affordable prices are stacked to the ceiling in the tiny space, ready for your next foray. Vinyl’s renaissance in recent years has made this a must-visit for discerning ears.



An Upcoming Design Spot
即將出現的設計熱點

HKDC Design and Fashion Base
香港設計中心設計及時裝基地



**Prepare to be
dazzled by a
brand new design
hotspot in vibrant
Sham Shui Po
in 2024!**



15 sustainable

CIRCULAR



Your journey
starts here:
立即開始
你的探索旅程 -



explore a fresh, future-oriented
side of Hong Kong now!
體驗一個以未來主導的清新香港!

香港15個可持續發展創變者
Sustainable initiatives in Hong Kong

CITY MAP



Created by



Powered by

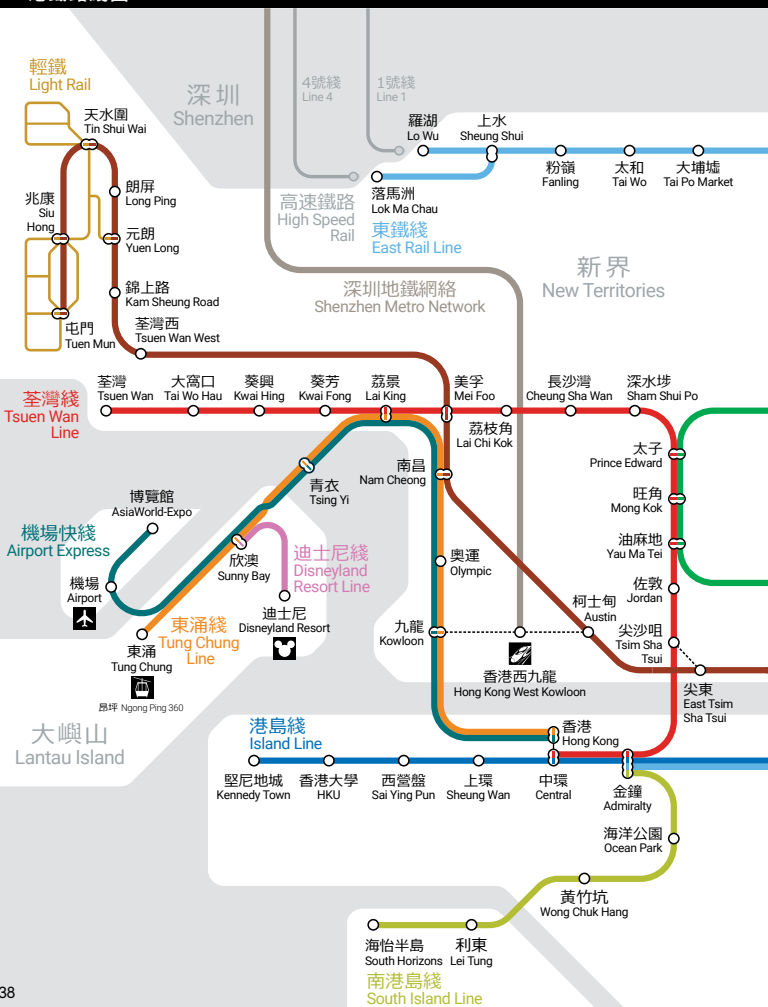
CreativeNL



Kingdom of the Netherlands

MTR System Map

港鐵路綫圖



○—○ 已付車費區域
Paid area

○—○ 開外區域
Unpaid area

◻ 轉綫站
Interchange

* 只限賽馬日
Race days only



Afterword

結語

This travel guide is one of the many endeavours that BODW CityProg supports. It is intended to promote the city's design community and its inspiring design sites, as well as introduce the work of talented designers and creators to a broader audience. Through this guide, we hope to inspire greater appreciation of Hong Kong's unique design heritage and its potential for further creative growth. This publication is the product of a true collaborative effort, made possible by the dedication and support of the steering committees, the advisor and many partners who contributed expertise and resources. Gratitude also goes to CreateHK for providing generous support to the creative industry. We sincerely appreciate their contributions and the collective passion for design that brought this guide to life.

About BODW City Programme (CityProg)

BODW City Programme (CityProg) is the 'beyond the main stage' Hong Kong design festival of Business of Design Week (BODW) Summit, initiated in 2018 by Hong Kong Design Centre (HKDC). Each year, CityProg partners more than 100 creative associates to spark 100-odd design events in November and December, nurturing a thriving creative ecosystem in Hong Kong and making the city a better place.

Create Hong Kong of the Government of the Hong Kong Special Administrative Region is the Lead Sponsor of CityProg.



 www.bodwcityprog.com

 [bodwcityprogramme](#)

 [bodw.cityprog](#)



About Hong Kong Design Centre

A non-governmental organisation registered in 2001 and established in 2002, Hong Kong Design Centre is a strategic partner of the Government of the Hong Kong Special Administrative Region in advancing Hong Kong as an international centre of design excellence in Asia.

Our public mission is to promote wider and strategic use of design and design thinking to create business value and improve societal well-being.



About CreateHK

Create Hong Kong (CreateHK) is a dedicated office set up by the Government of the Hong Kong Special Administrative Region in June 2009 to spearhead the development of creative industries in Hong Kong. From 1 July 2022 onwards, it has been under the Culture, Sports and Tourism Bureau. Its strategic foci are nurturing talent and facilitating start-ups, exploring markets, promoting cross-sectoral and cross-genre collaboration, and promoting Hong Kong as Asia's creative capital and fostering a creative atmosphere in the community.

CreateHK sponsors HKDC to organise 'Business of Design Week' (BODW), 'BODW City Programme' (CityProg), 'DFA Awards', 'Knowledge of Design Week' (KODW), 'Fashion Asia Hong Kong', 'Design Incubation Programme' and 'Fashion Incubation Programme', among other projects, to promote Hong Kong design.

Acknowledgements

鳴謝

Hong Kong Design Centre

Publisher

Create Hong Kong of the Government of the Hong Kong Special Administrative Region

Lead Sponsor of BODW City Programme

Prof Eric Yim

Prof Viveca Chan

Dr Lay Lian Ong

Isabella Chow

Sam Lam

Steering Committee

Sam Lam

Project Director

Charmaine Chan

Advisor

Stephen McCarty Editorial

Editor

DRAFT CO.

Content research and copywriting

CityProg Team

Execution and coordination

We are deeply grateful for the cooperation of the owners and operators of the sites in this book, and in many cases to the design firms involved in the sites' creation. The willingness of these people and firms to share their work, their unique perspectives and their own photography is greatly appreciated.

Disclaimer of BODW City Programme: Create Hong Kong of the Government of the Hong Kong Special Administrative Region provides funding support to the project only, and does not otherwise take part in the project. Any opinions, findings, conclusions or recommendations expressed in these materials/events (or by members of the project team) are those of the project organisers only and do not reflect the views of the Government of the Hong Kong Special Administrative Region, the Culture, Sports and Tourism Bureau, Create Hong Kong, the CreateSmart Initiative Secretariat or the CreateSmart Initiative Vetting Committee.

Copyright 2023 Hong Kong Design Centre. All rights reserved. No part of this publication may be reproduced or stored in an electronic retrieval system without prior written permission from the publisher.

ISBN 9789881386441

Presented by



Lead Sponsor of
BODW City Programme



ISBN 9789881386441

